

# So slim, So smart!



## Altivar 32

Variable speed drives for asynchronous and synchronous motors in speed control mode from 0.18 to 15 kW



- Elevator for the manufacturing sector: conveyors, storage and retrieval systems, handling equipment
- Simple packaging
- Metal processing machinery: bending, welding, cutting, etc.
- Wood-working machines
- Textiles
- Machines with simple control systems: scrolling advertising panels, automatic doors, etc.

---

**+** over 150 application-specific functions

# Altivar 32 range

## Optimise your industrial machines

### More innovations

- Slim shape product (45 mm wide)
- Circuit-breaker connected directly to the product
- Mounting can be vertical or on the side
- Integrated safety functions
- Integrated programmable logic functions
- Built-in Bluetooth®: remote adjustment and parameter setting via mobile phone or PC
- Configuration with the power off in its original packaging

### More openness

- Application-oriented: predefined settings and combinations of functions
- Modbus and CANopen integrated as standard
- Access to the majority of industrial communication networks
- Tools adapted to each stage in the product lifecycle

### More energy savings

- New control profile for synchronous motors in speed control mode
- Control profiles to optimise energy

**+ 10% energy efficiency due to the use of synchronous motors in speed control mode:**

- New control profile for optimised performance
- Simplification of the speed reducer stage for:
  - Applications requiring significant torque at low speed (bending presses, extruders, etc.)
  - Direct mounting on applications requiring low speeds (metering pumps, small machine fans)

# Altivar 32, packed with innovations

## Remote adjustment and configuration

On-board Bluetooth® for configuration via mobile phone or PC

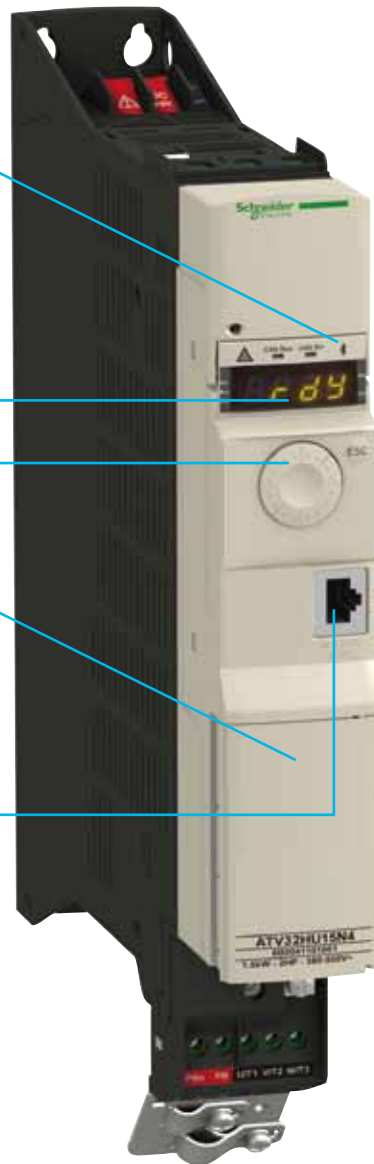


## Simplified user interface for greater efficiency

- 7-segment display: better visibility from a distance
- Navigation button: faster setting
- Ease of identification: product identification on a hinged door on the front panel

## Standard connector for

- Modbus or CANopen networks
- Dialogue with tools common to the Altivar and Lexium ranges



**10 drives**  
configured  
in less than  
5 minutes  
with the  
Multi-Loader!



**Easily  
integrated**

- 45 mm wide  
(up to 1.5 kW in  
400 V version)
- 60 mm wide  
(up to 4 kW in  
400 V version)



## Practical, recyclable packaging

You can configure your Altivar 32 in its packaging, with the power off.

# Function blocks integrated with ATV Logic

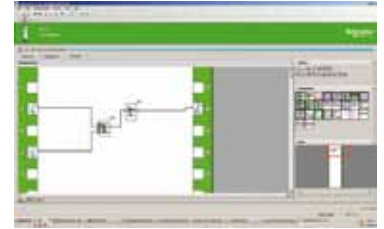
- The drive is at the heart of the control system and replaces the simple functions performed by a PLC.
- The software function blocks integrated in the product can be used to:
  - Perform simple control system functions (Boolean, arithmetical operations, timers, counters, comparators, etc.)
  - Write small automated sequences
  - Customise the drive to the machine application
- The ATV Logic function is programmed with the SoMove software.

**SoMove** is setup software for the TeSys, Altistart, Altivar and Lexium motor control ranges.

For the Altivar 32 range:

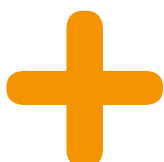
- Menu customisation
- Creation of configuration files for Multi-Loader and SoMove Mobile
- Maintenance function (oscilloscope, etc.)
- Programming of logic functions
- Configuration of safety functions

**SoMove Mobile** can be used to load and adjust drive configurations via mobile phone.



## Typical sequence for a scrolling advertising panel application

1. Turn on
2. Select the parameters:
  - Number of displays
  - Display time
  - Scroll speed
  - Length of display
3. Start-up
4. Homing
5. Display positioning
6. Viewing time
7. Presentation of the next poster
8. Return to sequence 5 for each poster
9. Change scroll direction when the last poster has been shown



- autonomy
- savings



- equipment
- wiring



# Tools that focus on your applications

Calling all designers, installers, distributors, after-sales technicians, etc: minimise your installation and programming times and cut your costs, with the common platform of tools for the Altivar and Lexium ranges.



**Graphic display terminal:** user-friendly programming with more than 23 languages



**Simple-Loader:** duplicates a configuration on two identical drives



**Built-in Bluetooth® connection:** simplified communication between products equipped with Bluetooth®



**Multi-Loader :** configures and stores the configuration files for several drives on an SD card



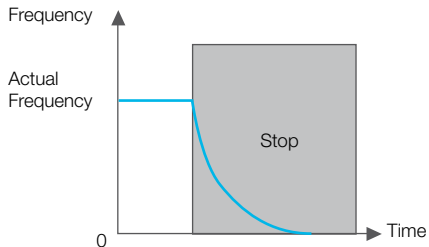
**SoMove :** setup software

# Safety incorporated as standard

## Safety functions for more protection in the machine environment

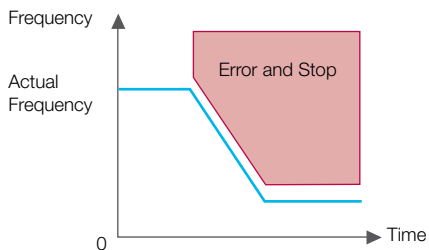
### STO: Safe Torque Off

Freewheel stop by eliminating the torque on the motor shaft.



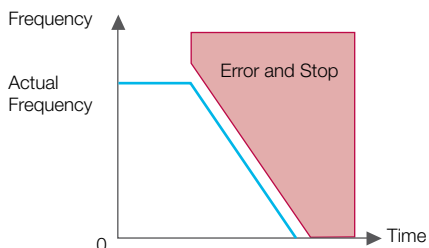
### SLS: Safely Limited Speed

- Slows down then holds the motor at a predefined speed, causes STO stopping if this speed is exceeded.
- The SDI function (Safe Direction) is integrated in SLS.



### SS1: Safe Stop 1

- Motor stops according to a predefined speed ramp.
- Checks that the motor has actually stopped or has reached a minimum predefined speed then activates the STO function.



### Safe wiring

Wiring made simple with the terminal diagram on the inside cover



The safety functions can be used in any combination.

Two logic inputs provide redundancy on most of them, hence avoiding the need to use an external safety module.

### Certifications:

- Safety Integrity Level (SIL1, 2 or 3) according to IEC 61508 standard (parts 1 and 2)
- Performance level (PL"d") according to ISO 13849-1/-2 Category 3



- 30% savings compared to a solution with external safety modules
- Altivar 32 is compatible with ATEX environment

# Mounting designed to ensure maximum integration

Its extra-slim format and removable front panel optimise Altivar 32's integration into the tiniest spaces (300 mm or less!).



Flexible mounting, vertical or on the side.  
Above, mounted at the back of the enclosure with control unit at 90° for ease of access.



Ease of side-by-side mounting.



Easy-fit communication modules in cassette format.



Safe, simple maintenance thanks to the terminal block that can be removed (with the power off) from the motor power section.



Power supply and protection for several drives by means of a busbar and circuitbreakers.



Power supply on DC bus: connection between the DC bus products for balanced loads and optimised energy management.



- 40% more space freed up in enclosures
- Up to 14 products side by side instead of 6 fitted widthways!

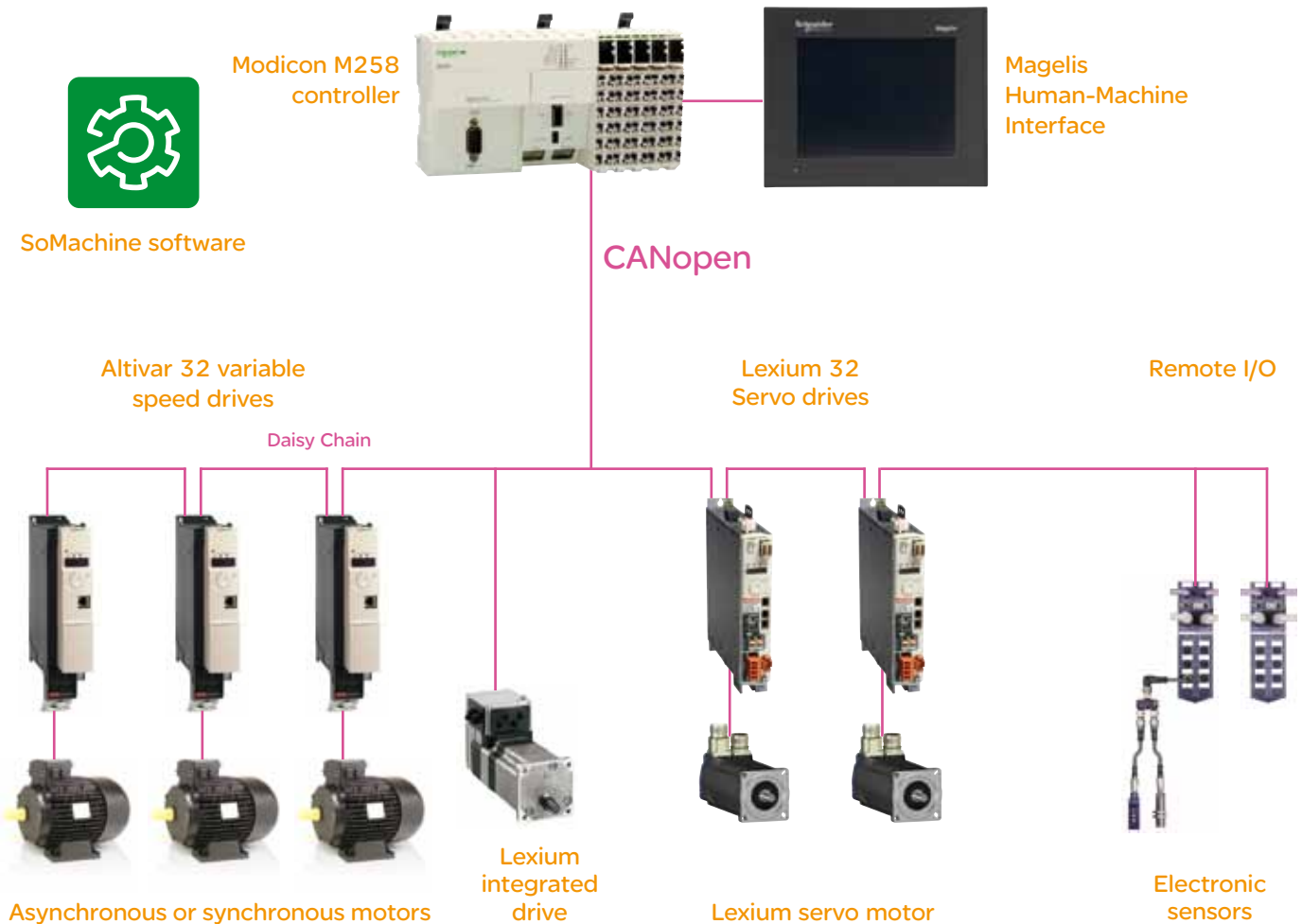


# Totally transparent integration

Altivar 32 integrates into any environment and communicates with any control system product:

- Modbus and CANopen are integrated as standard.
- Option cards: CANopen Daisy Chain, Ethernet IP/Modbus TCP Dual Port, Profibus DP V1, DeviceNet, EtherCat, etc.
- Numerous support and design tools (macros for PLCs, mechanical installation software such as AutoCAD, wiring diagram design help software such as ePLAN).

Altivar 32 is compatible with Schneider Electric's "TVDA" control system architectures (tested, validated and documented). These architectures have been designed to optimise machines in terms of cost, size and performance.



 **Openness to communication networks**

# A comprehensive offer to suit your application performance and functions

Boost your productivity with equipment designed to work together in harmony (circuit-breakers, motor starters, variable speed drives, etc.).

## Altivar 32

in speed control mode



## Lexium 32

in position control mode



## Optimisation

- of your machines' performance
- of your application functions
- of your enclosure dimensions
- of tool and accessory logistics

### Common tools, software and functions



#### Multi-Loader

Load and store configurations even with the power off



#### Graphic terminal

Configuration and communication in your country's language



#### Bluetooth®

Wireless setup and maintenance



#### SoMove and SoMove Mobile, SoMachine

Software common to both ranges for greater ease of use



#### Common functions

- Identical human-machine dialogue
- Integrated safety functions (STO, SLS, SS1)

### Mounting and wiring principles

- Extra-slim format, same fixings for side-by-side mounting
- Removable motor connection
- Common communication cassettes



### Software support

- PLCopen libraries
- Integration files for electrical and mechanical CAD systems (ePLAN and 2D/3D CAD)

### Common accessories

- Communication modules (cassettes)
- EMC filters
- Braking resistor
- Line chokes



## Dimensions (in mm) width x height x depth

M2: 200 - 240 V single-phase with integrated EMC filter	
N4: 380 - 500 V three-phase with integrated EMC filter	
ATV32H018M2... H075M2, ATV32H037N4... HU15N4	<b>TA: 45 x 317 x 245</b>
ATV32HU11M2... HU22M2, ATV32HU22N4... HU40N4	<b>TB: 60 x 317 x 245</b>
ATV32HU55N4, ATV32HU75N4	<b>TC: 150 x 232 x 232</b>
ATV32HD11N4, ATV32HD15N4	<b>TD: 180 x 330 x 232</b>

## A complete range



## Standards and certifications

IEC/EN 61800-5-1, IEC/EN 61800-3 (environments 1 and 2, categories C2 and C3), UL508C  
EN 954-1 Category 3, ISO/EN 13849-1/- 2 Category 3 (PLd), IEC 61800-5-2,  
IEC 61508 (parts 1&2) SIL1 SIL2 SIL3 level, draft standard EN 50495E  
CE, UL, CSA, C-Tick, GOST, NOM.

**WA**

22 Beneficial Way Wangara WA 6065 ☎ (08) 6314 1111  
✉ [support@automation-control.com.au](mailto:support@automation-control.com.au)

ABN 87 619 578 595

**NSW**

Unit 7 / 70 Holbeche Road Arndell Park NSW 2148 ☎ (02) 8078 2288  
✉ [cs@automation-control.com.au](mailto:cs@automation-control.com.au)

ABN 61 645 267 116