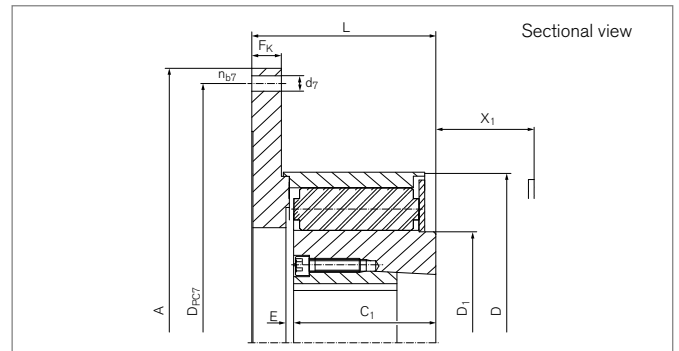


Torsional Highflex Couplings

RINGFEDER® TNR 2425.1

Single-row, SAE flange-shaft connections with taper clamping bush



Size	Taper bushing	SAE size	A	D _{PC7}	d ₇	n _{b7}	D	D ₁	C ₁
			mm	mm	mm		mm	mm	mm
120.1 - 06.5	1615	6,5	215,9	200,0	9,5	6	120	73	52,0
120.1 - 07.5	1615	7,5	241,3	222,3	9,5	8	120	73	52,0
120.1 - 08.0	1615	8,0	263,5	244,5	11,0	6	120	73	52,0
120.1 - 10.0	1615	10,0	314,3	295,3	11,0	8	120	73	52,0
160.1 - 06.5	2012	6,5	215,9	200,0	9,5	6	160	100	64,0
160.1 - 07.5	2012	7,5	241,3	222,3	9,5	8	160	100	64,0
160.1 - 08.0	2012	8,0	263,5	244,5	11,0	6	160	100	64,0
160.1 - 10.0	2012	10,0	314,3	295,3	11,0	8	160	100	64,0
200.1 - 07.5	2517	7,5	222,3	213,3	9,5	8	200	129	80,0
200.1 - 08.0	2517	8,0	263,5	244,5	11,0	6	200	129	80,0
200.1 - 10.0	2517	10,0	314,3	295,3	11,0	8	200	129	80,0
200.1 - 11.5	2517	11,5	352,4	333,7	11,0	8	200	129	80,0
260.1 - 10.0	3535	10,0	314,3	295,3	11,0	8	260	165	100,0
260.1 - 11.5	3535	11,5	352,4	333,7	11,0	8	260	165	100,0
260.1 - 14.0	3535	14,0	466,7	438,2	14,5	8	260	165	100,0
260.1 - 16.0	3535	16,0	517,5	489,0	14,5	8	260	165	100,0
320.1 - 14.0	4040	14,0	466,7	438,2	14,5	8	320	208	125,0
320.1 - 16.0	4040	16,0	517,5	489,0	14,5	8	320	208	125,0
320.1 - 18.0	4040	18,0	571,5	542,9	18,0	6	320	208	125,0
400.1 - 16.0	5050	16,0	517,5	489,0	14,5	8	400	268	156,0
400.1 - 18.0	5050	18,0	571,5	542,9	18,0	6	400	268	156,0
400.1 - 21.0	5050	21,0	673,1	641,4	18,0	12	400	268	156,0
400.1 - 24.0	5050	24,0	733,4	692,2	22,0	12	400	268	156,0

Taper bushing bore see chapter „Ordering example“ in Product Paper & Tech Paper
„RINGFEDER® Torsional Highflex Couplings“

To continue see next page

Torsional Highflex Couplings RINGFEDER® TNR 2425.1

Size	L	E	F _E	F _K	X ₁	J _F	J _N ¹⁾	G _{wub} ¹⁾
	mm	mm	mm	mm	mm	10 ⁻³ kgm ²	10 ⁻³ kgm ²	kg
120.1 - 06.5	71	4,0	+/- 1,0	13	41	6	1,4	2,8
120.1 - 07.5	71	4,0	+/- 1,0	13	41	9	1,4	3,1
120.1 - 08.0	71	4,0	+/- 1,0	13	41	12	1,4	3,4
120.1 - 10.0	71	4,0	+/- 1,0	13	41	26	1,4	4,1
160.1 - 06.5	84	4,0	+/- 1,0	15	50	9	7,6	5,3
160.1 - 07.5	84	4,0	+/- 1,0	15	50	12	7,6	5,6
160.1 - 08.0	84	4,0	+/- 1,0	15	50	16	7,6	5,9
160.1 - 10.0	84	4,0	+/- 1,0	15	50	31	7,6	6,8
200.1 - 07.5	104	5,0	+/- 1,5	18	64	23	24	10,2
200.1 - 08.0	104	5,0	+/- 1,5	18	64	28	24	10,6
200.1 - 10.0	104	5,0	+/- 1,5	18	64	45	24	11,6
200.1 - 11.5	104	5,0	+/- 1,5	18	64	66	24	12,6
260.1 - 10.0	132	6,0	+/- 1,5	24	80	92	80	20,3
260.1 - 11.5	132	6,0	+/- 1,5	24	80	118	80	21,5
260.1 - 14.0	132	6,0	+/- 1,5	24	80	260	80	25,6
260.1 - 16.0	132	6,0	+/- 1,5	24	80	381	80	28,0
320.1 - 14.0	162	7,0	+/- 2,0	26	100	474	275	44,6
320.1 - 16.0	162	7,0	+/- 2,0	26	100	662	275	47,2
320.1 - 18.0	162	7,0	+/- 2,0	26	100	1195	275	50,3
400.1 - 16.0	197	8,0	+/- 2,0	31	126	760	897	83,9
400.1 - 18.0	197	8,0	+/- 2,0	31	126	971	897	87,6
400.1 - 21.0	197	8,0	+/- 2,0	31	126	1579	897	95,2
400.1 - 24.0	197	8,0	+/- 2,0	31	126	2035	897	99,7

¹⁾ Weight and mass moment of inertia for hubs without taper lock bushing

Explanations

SAE = Flange connection to SAE J 620 d	D₁ = Outer diameter	X₁ = Required space for dismounting of the elastic buffer
A = Max. outer diameter	C₁ = Guided length in hub bore	J_F = Moment of inertia on thrust flange side
D_{PC7} = Pitch circle diameter of bore holes d ₇	L = Total length	J_N = Moment of inertia hub side
d₇ = Bore diameter	E = Gap width between left and right component	G_{wub} = Weight, unbored
n_{b7} = Quantity of bore d ₇	F_E = Tolerance of the gap width E	
D = Outer diameter	F_K = Flange thickness	

Ordering example

Series	Size	Buffer	Taper bushing	Bore taper bushing
TNR 2425.1	200.1 - 08.0	Pb 70	2517	28

DISTRIBUTED BY



Further information on
RINGFEDER® TNR 2425.1

chainanddrives.com.au
support@chainanddrives.com.au

Disclaimer of liability

All technical details and notes are non-binding and cannot be used as a basis for legal claims. The user is obligated to determine whether the represented products meet his requirements. We reserve the right carry out modifications at any time in the interests of technical progress.

