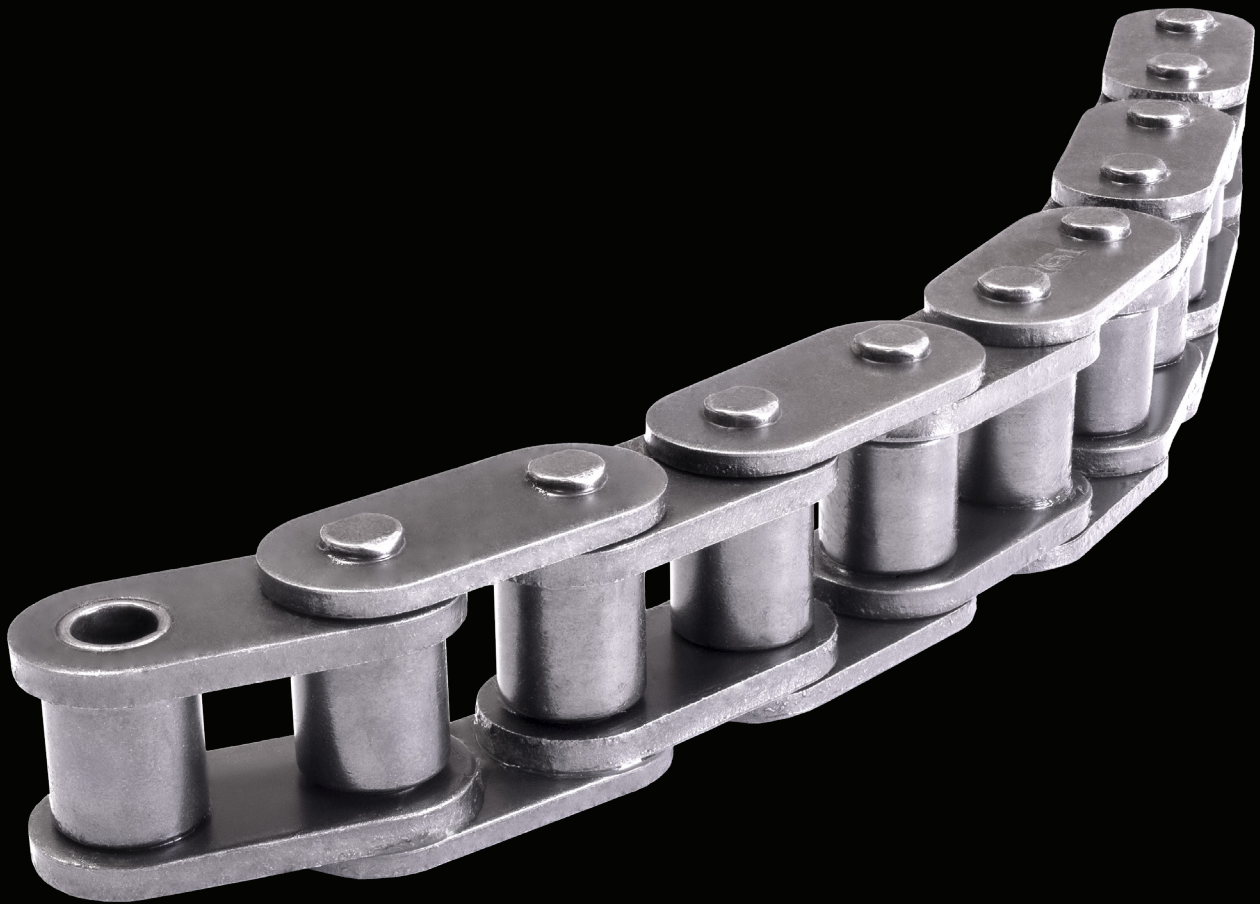


TRANSDRIVE+[®]



**Mining Super Heavy-Duty SBR Zintek[®]
Straight Side Plate Roller Chain**

transdrive.com.au



The TransDrive+® Mining Super Heavy Duty SBR Zintek® Straight Side Plate Roller Chain is engineered for extreme-duty mining and bulk handling environments where strength and reliability are critical.

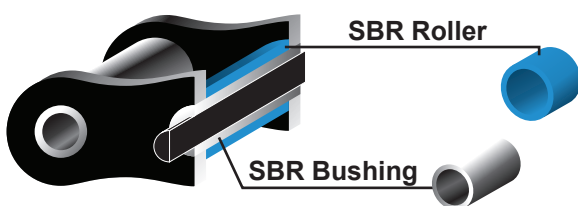
Featuring advanced Zintek® 200 XT Corrosion Protection, it delivers exceptional resistance to harsh, abrasive, and high-moisture conditions, helping maintain consistent performance in the most demanding applications.

With a 35% higher load capacity and an extended service life, this mining-grade roller chain is built to handle higher stresses while reducing downtime and maintenance requirements. Designed specifically for heavy-duty industrial and mining operations, the TransDrive+® Mining Super Heavy Duty SBR Zintek® Straight Side Plate Roller Chain provides dependable, long-lasting performance when failure is not an option.

- ▶ Zintek® 200 XT Corrosion Protection
- ▶ 35% Increase in Load Ratings
- ▶ Durable Straight Side Plate
- ▶ SBR (Solid Bush & Roller)

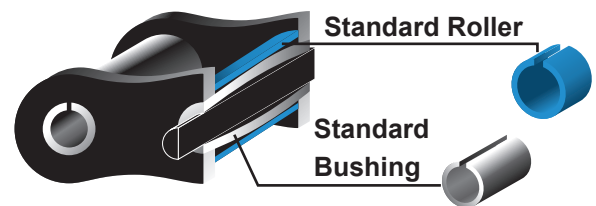
SBR (Solid Bush & Roller)

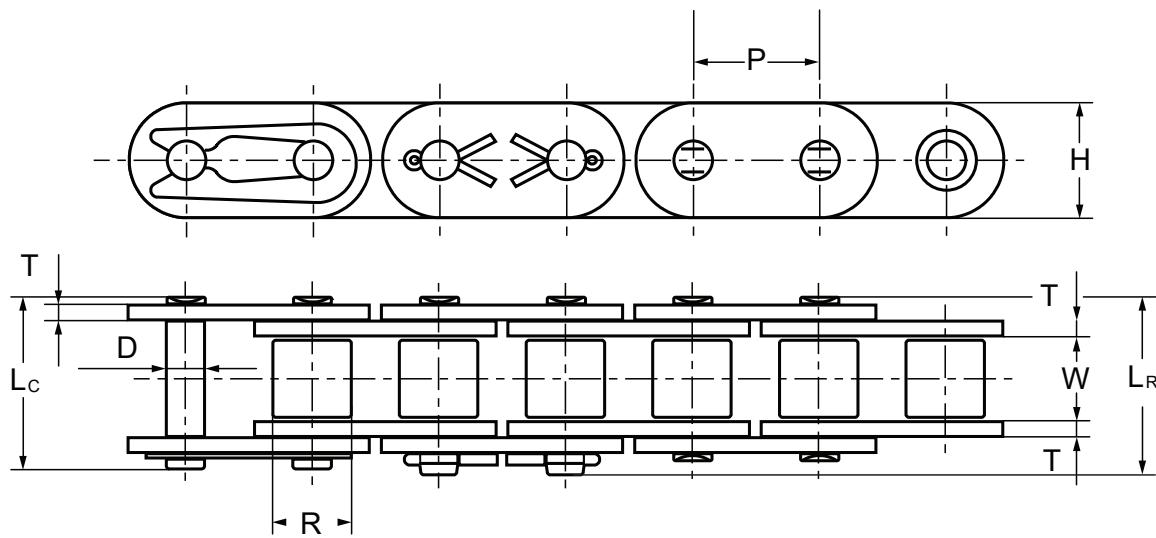
Solid bushings with tapered ends assure straight ID after assembly resulting in ultra straight bearing surfaces.



Conventional Chain

Bushing ID becomes barrel shaped as a result of press fit and makes uneven contact between pin and bushing.





ANSI Chain No.	Dimensions (mm)								Average Ultimate Strength	Maximum Allowable Load	Average Chain Weight
	Pitch P	Roller		Pin		Plate		Thickness			
		Width W	Dia. R	Dia. D	Length LR	Length Lc	Height H				
								kN	kN/lbf	kg/m	
25-SH1P	6.350	3.18	3.30	2.31	-	9.0	6.00	1.04	5.6	5.09/1157	0.11
35-SH1P	9.525	4.77	5.08	3.58	14.3	13.3	9.00	1.50	13.6	11.00/2500	0.41
40-SH1P	12.700	7.85	7.95	3.96	19.9	18.8	12.00	2.03	24.8	22.40/5091	0.82
50-SH1P	15.875	9.40	10.16	5.08	23.4	22.1	15.09	2.42	36.2	30.40/6909	1.25
60-SH1P	19.050	12.57	11.91	5.94	31.6	29.2	18.00	3.25	50.4	44.10/10023	1.87
80-SH1P	25.400	15.75	15.88	7.92	37.7	36.2	24.00	4.00	93.0	88.20/20045	3.10
100-SH1P	31.750	18.90	19.05	9.53	46.9	43.6	30.00	4.80	129.1	116.60/26500	4.52
120-SH1P	38.100	25.22	22.23	11.10	57.5	53.5	35.70	5.60	175.3	158.20/35954	6.60
140-SH1P	44.450	25.22	25.40	12.70	62.2	57.6	41.00	6.40	266.5	206.00/46818	8.30
160-SH1P	50.800	31.55	28.58	14.27	73.0	68.2	47.80	7.20	293.0	274.00/62273	10.30
200-SH1P	63.500	37.85	39.68	19.85	93.5	86.6	60.00	9.50	562.3	506.10/115023	19.16
5H63	19.050	9.55	14.29	7.30	-	27.9	19.60	4.15/3.25	73.0	65.70/14932	2.62
C70SH	22.225	14.30	15.60	7.94	-	36.6	22.60	4.8/4.0	98.0	88.25/20056	3.75
955	28.575	17.46	21.30	11.10	-	46.8	30.60	6.4/5.6	156.8	142.10/35635	7.95

TRANSDRIVE+[®]

**Need more information about
TransDrive+[®] products,
customised products and
services, get in touch.**

**support@transdrive.com.au
transdrive.com.au**

Distributor

