

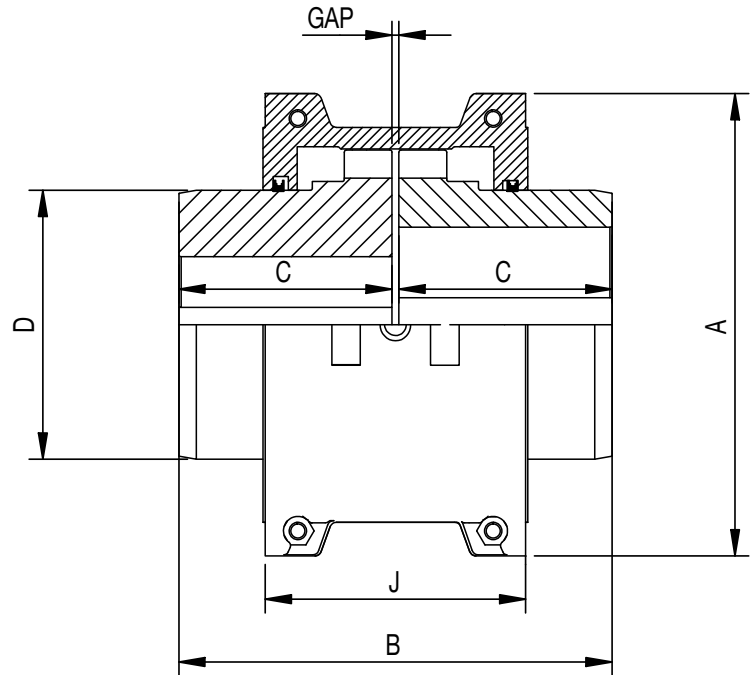
Grid & Gear Couplings



SERIES 1000TH GRID COUPLING

Horizontally Split Cover

- General purpose
- Easy access to grid minimizes downtime
- Ideal for limited space applications
- Stop lug in cover prevents spinning during reversing service



Size	Coupling Rating Nm	Max Speed	Min Bore mm	② Max Bore mm	① Cplg Wt. Kg	A mm	B mm	C mm	D mm	J mm	Gap mm
1020T	52	4500	13	28	1.9	101.6	98	47.5	39.7	66.5	3.2
1030T	149	4500	13	35	2.6	110	98	47.5	49.2	71.8	3.2
1040T	249	4500	13	43	3.4	116.9	104.6	50.8	57.1	70	3.2
1050T	435	4500	13	50	5.4	138	123.6	60.3	66.7	79.5	3.2
1060T	684	4350	20	56	7.3	150	130	63.5	76.2	92	3.2
1070T	994	4125	20	67	10	162	155.4	76.2	87.3	96	3.2
1080T	2050	3600	27	80	18	194	180.8	88.9	104.8	116	3.2
1090T	3730	3600	27	95	25	213	199.8	98.4	123.8	122	3.2
1100T	6,280	2440	42	110	42	250	245.7	120.6	142	155.5	4.8
1110T	9,320	2250	42	120	55	270	258.5	127	160.3	161.5	4.8
1120T	13,700	2025	61	140	75	308	304.4	149.2	179.4	191.5	6.4
1130T	19,900	1800	67	170	116	346	329.8	161.9	217.5	195	6.4
1140T	28,600	1650	67	200	171	384	374.2	184.1	254	201	6.4
1150T	39,800	1500	108	215	216	454	372	183	269	273	6.4
1160T	55,900	1350	121	240	304	501	402	198	305	279	6.4
1170T	74,600	1225	134	42	423	569	438	216	356	309	6.4
1180T	103,000	1100	153	280	594	630	484	239	394	321	6.4
1190T	137,000	1050	153	335	764	676	524	259	437	325	6.4
1200T	186,000	900	178	360	1042	757	564	279	498	356	6.4

① Coupling weight with no bore

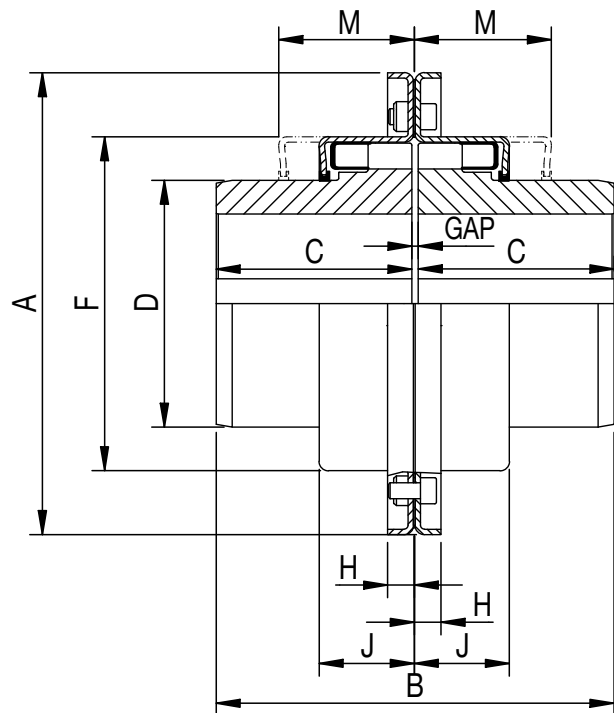
② Max bores stated above use rectangular parallel keyways to BS 4235 pt 1: 1972 or DIN 6885 sht 1: 1969

Other couplings available are spacer and half spacer models. Also couplings with disc or drum brakes can be supplied.

SERIES 1000TV GRID COUPLING

Vertically Split Cover

- General purpose
- Ideal for higher running speeds



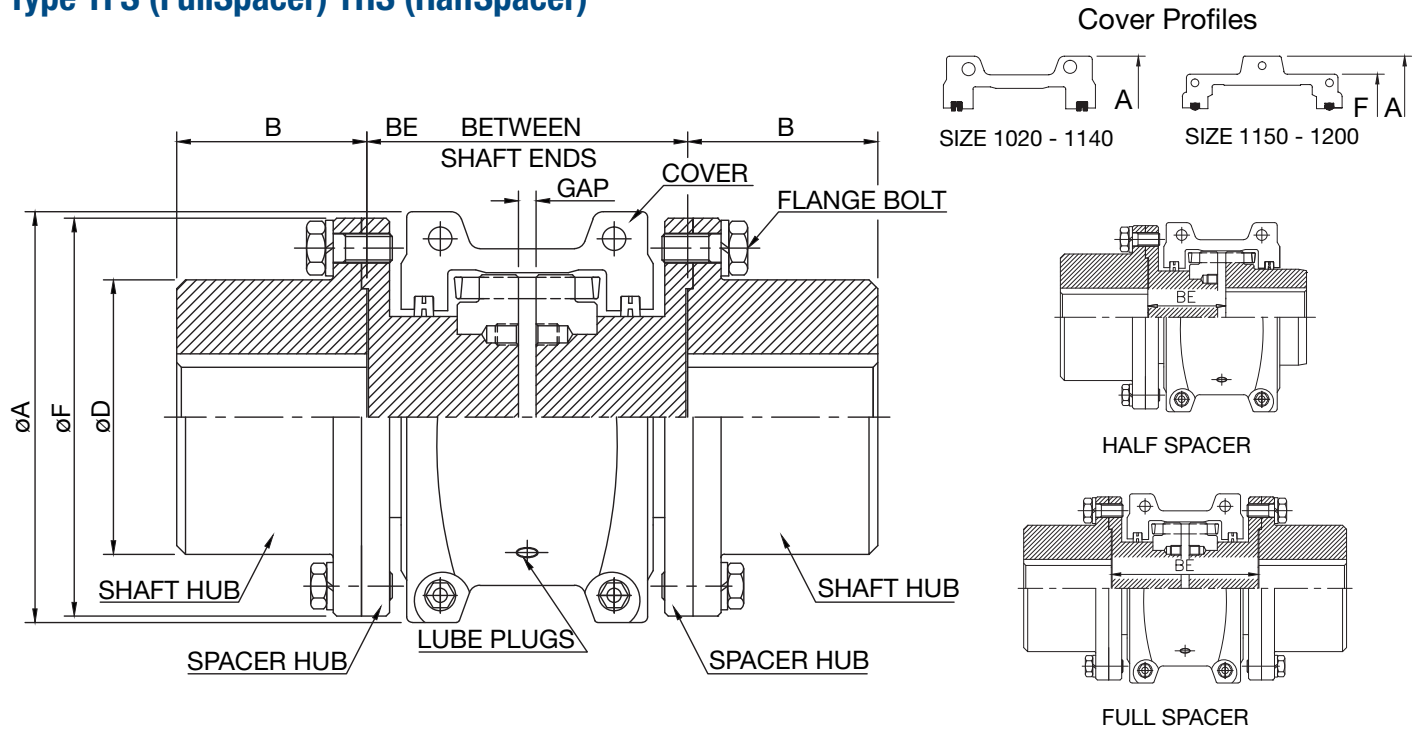
Size	Coupling Rating Nm	Max Speed	Min Bore mm	② Max Bore mm	① Cplg Wt. Kg	A mm	B mm	C mm	D mm	F mm	H mm	J mm	M mm	Gap mm
1020T	52	4500	13	28	1.9	111.1	98	47.5	39.7	62.5	9.5	66.5	48	3.2
1030T	149	4500	13	35	2.6	120.7	98	47.5	49.2	72.2	9.5	71.8	48	3.2
1040T	249	4500	13	43	3.4	116.9	104.6	50.8	57.1	80.0	9.5	70	51	3.2
1050T	435	4500	13	50	5.4	138	123.6	60.3	66.7	96.7	13	79.5	61	3.2
1060T	684	4350	20	56	7.3	150	130	63.5	76.2	109.8	13	92	64	3.2
1070T	994	4125	20	67	10	162	155.4	76.2	87.3	120.7	13	96	67	3.2
1080T	2050	3600	27	80	18	194	180.8	88.9	104.8	147.4	13	116	89	3.2
1090T	3730	3600	27	95	25	213	199.8	98.4	123.8	165.7	13	122	96	3.2
1100T	6,280	2440	42	110	42	250	245.7	120.6	142	196.8	16	155.5	121	4.8
1110T	9,320	2250	42	120	55	270	258.5	127	160.3	285.8	16	161.5	124	4.8
1120T	13,700	2025	61	140	75	308	304.4	149.2	179.4	319.0	16	191.5	143	6.4
1130T	19,900	1800	67	170	116	346	329.8	161.9	217.5	377.8	22	195	147	6.4
1140T	28,600	1650	67	200	171	384	374.2	184.1	254	416.0	22	201	156	6.4

① Coupling weight with no bore

② Max bores stated above use rectangular parallel keyways to BS 4235 pt 1: 1972 or DIN 6885 sht 1: 1969

SERIES 100TFS & THS GRID COUPLINGS

Type TFS (FullSpacer) THS (HalfSpacer)



Size	Max Speed	Coupling Rating Nm	Min Bore mm	Max Bore mm	A mm	B mm	BE (TFS) mm		BE (THS) mm		D mm	F mm	Gap mm	Flange Bolt No.	Lube wt kg
							Min	Max	Min	Max					
1020T	3,600	52	13	35	101.6	35	89	203	45	102	52	86	5	4	0.03
1030T	3,600	149	13	43	110.0	41	89	216	45	109	59	94	5	8	0.03
1040T	3,600	249	13	56	116.9	54	89	216	45	109	78	113	5	8	0.05
1050T	3,600	435	13	67	138.0	60	112	216	57	109	87	126	5	8	0.05
1060T	3,600	684	20	80	150.0	73	127	330	64	166	103	145	5	8	0.09
1070T	3,600	994	20	85	162.0	79	127	330	64	166	109	153	5	12	0.11
1080T	3,600	2,050	27	95	194.0	89	184	406	93	204	122	178	5	12	0.17
1090T	3,600	3,730	27	110	213.0	102	184	406	93	204	142	210	5	12	0.25
1100T	2,400	6,280	39	130	250.0	90	203	406	103	205	171	251	6.5	12	0.43
1110T	2,250	9,320	51	150	270.0	104	210	406	106	205	196	277	6.5	12	0.51
1120T	2,025	13,700	64	170	308.0	119	246	406	125	205	225	319	9.5	12	0.73
1130T	1,800	19,900	77	190	346.0	135	257	406	130	205	238	346	9.5	12	0.91
1140T	1,650	28,600	89	210	384.0	152	267	406	135	205	266	386	9.5	12	1.13
1150T	1,500	39,800	102	270	454.0	173	345	371	175	187	334	425	9.5	14	1.95
1160T	1,350	55,900	115	290	501.0	186	356	406	180	205	366	457	9.5	14	2.81
1170T	1,225	74,600	127	340	569.0	220	384	445	194	224	425	527	9.5	16	3.49
1180T	1,100	103,000	102	340	630.0	249	400	490	202	247	451	591	9.5	16	3.76
1190T	1,050	137,000	115	380	676.0	276	411	530	207	267	508	660	9.5	18	4.40
1200T	900	186,000	127	400	757.0	305	445	575	224	289	530	711	9.5	18	5.62

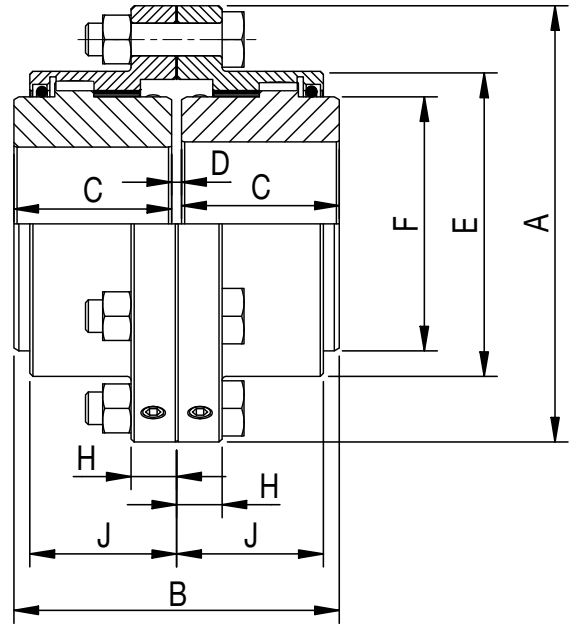
'BE' is the distance between shaft ends.

State the exact 'BE' number when ordering.

HIGH TORQUE GEAR COUPLING

Flexible Couplings Series GDE

Sizes 10-70



GDE Size	Coupling Rating Nm	Maximum Speed RPM	Maximum Bore mm	DIMENSIONS mm								Mass kg
				A	B	C	D	E	F	H	J	
10	1,140	8,000	50	116	89	43	3	84	69	14	39	5
15	2,350	6,500	65	152	101	49	3	105	86	19	48	9
20	4,270	5,600	78	178	127	62	3	126	105	19	59	16
25	7,470	5,000	98	213	159	77	5	155	131	22	72	27
30	12,100	4,400	111	240	187	91	5	180	152	22	84	41
35	18,500	3,900	134	279	218	106	6	211	178	28	98	66
40	30,600	3,600	160	318	248	121	6	245	210	28	111	97
45	42,000	3,200	183	346	278	135	8	274	235	28	123	123
50	56,600	2,900	200	389	314	153	8	306	254	38	141	178
55	74,000	2,650	220	425	344	168	8	334	279	38	158	233
60	90,400	2,450	244	457	384	188	8	366	305	25	169	291
70	135,000	2,150	289	527	452	221	9.5	425	355	28	196	445

Contact the factory for additional details, modifications and variations.
Combined angular and parallel offset should not exceed + 3/4° per gear mesh.

FLANGED SLEEVE — DOUBLE-ENGAGEMENT TYPE

Application: Meets requirements of all standard applications for shaft sizes up to 289 mm. Compensates for both angular misalignment and parallel offset.

Description: Series GDE Flexible Coupling is designed with bolted center flanges to facilitate installation and alignment. Optimum separation of gear meshes permits high parallel offset capacity. Flanged-sleeve design makes possible minimum distance between bearing housings to facilitate shaft alignment. The coupling is optimized for the greatest torque capacity.

High Torque Gear Couplings – Fully-Crowned Teeth for Higher Torque, Higher Speed, Higher Misalignment Capacity

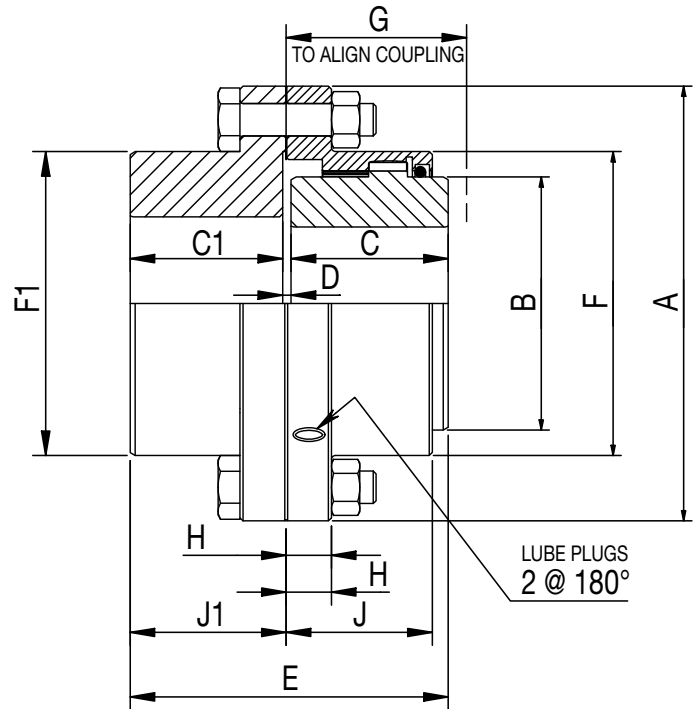
**ALL SERIES GDE & GDS COUPLINGS INCORPORATE THE
FOLLOWING ENGINEERED FEATURES:**

- ±3/4° angular misalignment capacity per gear mesh.
- Torque ratings at full misalignment - in excess of normal requirements for average applications.
- Accurately machined medium carbon steel hubs and sleeves.
- Positive-type O-ring seals keep lubricant in...contaminants out. Seals enshrouded to prevent damage.

HIGH TORQUE GEAR COUPLING

Flexible Couplings Series GDS

Sizes 10-70



GDS	Maximum Hub Bore (mm)		Torque Nm	DIMENSIONS											Mass kg
	Flex	Rigid		A	B	C	C1	D	E	F	F1	H	J	J1	
10	50	65	1,140	116	69	43	40	4	87	84	84	14	39	42	5
15	65	80	2,350	152	86	49	46	4	99	105	105	19	48	49	10
20	78	98	4,270	178	105	62	58	4	124	126	126	19	59	61	16
25	98	118	7,470	213	131	77	74	5	156	155	155	22	72	76	28
30	111	140	12,100	240	152	91	88	5	184	180	180	22	84	90	42
35	134	163	18,500	279	178	106	102	6	213.5	211	211	28	98	105	69
40	160	196	30,600	318	210	121	115	7	243	245	245	28	111	119	99
45	183	216	42,000	346	235	135	131	8	274	274	274	28	123	135	129
50	200	235	56,600	389	254	153	147	9	309	306	306	38	141	152	189
55	220	266	74,000	425	279	168	173	9	350	334	334	38	158	178	254
60	244	290	90,400	457	305	188	186	10	384	366	366	25	169	193	312
70	289	340	135,000	527	355	221	220	13	454	425	425	28	196	229	488

Contact the factory for additional details, modifications and variations.
Combined angular and parallel offset should not exceed + 3/4° per gear mesh.

FLANGED SLEEVE — SINGLE-ENGAGEMENT TYPE

Application: Used primarily in tandem pairs, connected by intermediate floating shafts or as individual unit in conjunction with a driver or driven shaft having self-aligning support bearing. When used singly, compensates for angular misalignment only.

Description: Series GDS Flexible Coupling consists of one standard flexible half coupling and one rigid half. The bolted center flanges facilitate installation and alignment.

Premier Industrial Company Leading Brands

OTHER PRODUCT SOLUTIONS FROM **ALTRA MOTION**

Our comprehensive product offerings include various types of clutches and brakes, overrunning clutches, engineered bearing assemblies, gearing and gear motors along with linear motion products, belted drives, couplings, limit switches, precision motors, drives & controls, miniature motors and engine braking systems. With thousands of product solutions available, Altra provides true single source convenience while meeting specific customer requirements. Many major OEMs and end users prefer Altra products as their No. 1 choice for performance and reliability.

WWW.ALTRAMOTION.COM



Electric Clutches & Brakes

Inertia Dynamics
Matrix
Stromag
Warner Electric



Precision Motors & Automation

Kollmorgen



Heavy Duty Clutches & Brakes

Industrial Clutch
Stromag
Svendborg Brakes
Twiflex
Wichita Clutch



Miniature Motors

Portescap



Overrunning Clutches

Formsprag Clutch
Marland Clutch
Stieber



Linear Systems

Thomson



Engineered Couplings & Universal Joints

Ameridrives
Bibby Turboflex
Guardian Couplings
Huco
Lamiflex Couplings
Stromag
TB Wood's



Engine Braking Systems

Jacobs Vehicle Systems



Gear Drives & Gear Motors

Bauer Gear Motor
Boston Gear
Delroyd Worm Gear
Nuttall Gear



Specialty Components

Kilian
Stromag
TB Wood's

A Global Footprint to Support Customers Around the World

- ★ Altra Headquarters
- Altra Engineering & Service Centers
- Altra Manufacturing Facilities

The Brands of Altra Motion

Couplings

Ameridrives
Bibby Turboflex
Guardian Coupling
Huco
Lamiflex Couplings
Stromag
TB Wood's

Linear Systems

Thomson

Geared Cam Limit Switches

Stromag

Engineered Bearing Assemblies

Kilian

Electric Clutches & Brakes

Matrix
Stromag
Warner Electric

Belted Drives

TB Wood's

Heavy Duty Clutches & Brakes

Twiflex
Stromag
Svendborg Brakes
Wichita Clutch

Gearing & Specialty Components

Bauer Gear Motor
Boston Gear
Delevan
Delroyd Worm Gear
Nuttall Gear

Engine Braking Systems Jacobs

Vehicle Systems

Precision Motors & Automation

Kollmorgen

Miniature Motors

Portescap

Overrunning Clutches

Formsprag Clutch
Marland Clutch
Stieber



WA LOCATIONS

Unit 1 / 45 Inspiration Drive, Wangara WA 6065
(08) 9303 4966

Unit 16 / 51-53 Kewdale Road, Welshpool WA 6106
(08) 6314 1155

support@chainanddrives.com.au

NSW LOCATION

Unit 7 / 70 Holbeche Road, Arndell Park NSW 2148
(02) 9674 8611

salesnsw@chainanddrives.com.au



A Mechanical Equipment Group Company