

Serving Industries Worldwide

Corrugator Machine and Paper Mill Bearings



Manufacturers of Ball and Roller Bearings



SCHEERER
BEARING CORPORATION



We understand that the ideal bearings for corrugator rolls will last the life of the rolls under proper operating and lubrication conditions. Scheerer Bearings are designed to meet that requirement.

Maximize Lifetime. Minimize Maintenance.



Scheerer is always thinking about the economics of its customers. We respect the tremendous investment that a corrugator and its associated converting equipment represents. We understand the expense of maintenance, repair and redundancy in manufacturing. Operational capacity is critical to profitability. For a partner who sees your big picture, you can count on Scheerer.

The Right Bearing + The Right Lubrication = Optimum Life

Manufacturing Maintenance Managers would ideally like the critical bearings to last the life of the corrugator rolls. New coatings can significantly increase the life of the rolls. That makes the quality and condition of the bearings even more critical in order to maximize efficiency and minimize expensive downtime.

Designed for Every Corrugator Manufacturer

Scheerer bearings are designed to perfectly match the specifications of every corrugator manufacturer as well as slitters, printers, tapers, gluers, stitchers, folders, diecutters, laminators and conveyors. Our corrugator customers rely on Scheerer for competitive advantage. We understand that small modifications can mean dramatic productivity gains. Talk to Scheerer about how to get the most from your bearings.

Serving the Corrugator Industry for Nearly Half a Century



Radial Roller Bearings with Self-aligning O.R.

Single and Double Row Self-aligning cylindrical roller bearings allow the bearing to operate under the best conditions even under severe misalignment to provide the highest operational reliability and longest service life. They are produced in both "axially-fixed" and "axially-floating" configurations. The latter compensates for thermally induced elongation and expansion.



Corrugator Roller Bearings

Corrugator Cylindrical Roller Bearings are specifically designed to allow axial movement of the rings. This floating configuration allows dynamic compensation of axial movements.

Guarantee

Scheerer Bearing guarantees that any bearing we manufacture or rework is free from defects in workmanship or material. Any bearing which is proven to be defective within one year from date of purchase will be replaced or reworked free of charge if the defective bearing is returned, charges prepaid, to Willow Grove, PA and the bearing is found to have been properly installed, lubricated, and used.

We Routinely Rebuild Ultra-large Bearings up to 100 in. O.D.

Our rebuild capabilities include radial ball and roller bearings, ball and roller thrust bearings from 2 inch I.D. to 100 inch O.D. in many different designs and materials. Scheerer will rebuild any type or style of bearing from any manufacturer.

You Know in Advance What You Are Getting and How Much it Will Cost

When you send us your bearings, our technicians inspect them thoroughly on arrival. A simplified rating system is used to determine the work needed to restore the bearing's operational parameters and a firm estimate is prepared.



Predictive Maintenance, Bearing Optimization and Other Best Practices

At Scheerer Bearing, customers will find engineering and productivity partners at your service — from design and specification to installation and operational monitoring.

Predictive Maintenance of Critical Bearings

Predictive maintenance of critical bearings in high productivity environments like paper and corrugated board manufacturing has become fundamental to minimize unscheduled downtime.

Scheerer Bearing works with customers to monitor and inspect bearings throughout mill operations. Our experts can help identify early signs of fatigue and component failure that could easily go unnoticed by an untrained eye.



Bearing Optimization. The Right Bearing in the Right Place

Our diverse experience across the entire spectrum of bearing types ensures you have the optimum bearings for the various needs of paper manufacturing.

Bearings that compensate for misalignment, simplify lubrication and incorporate advanced, high-durability materials suited for the rigors of heavy industry are all considerations to maximize your plant efficiency.

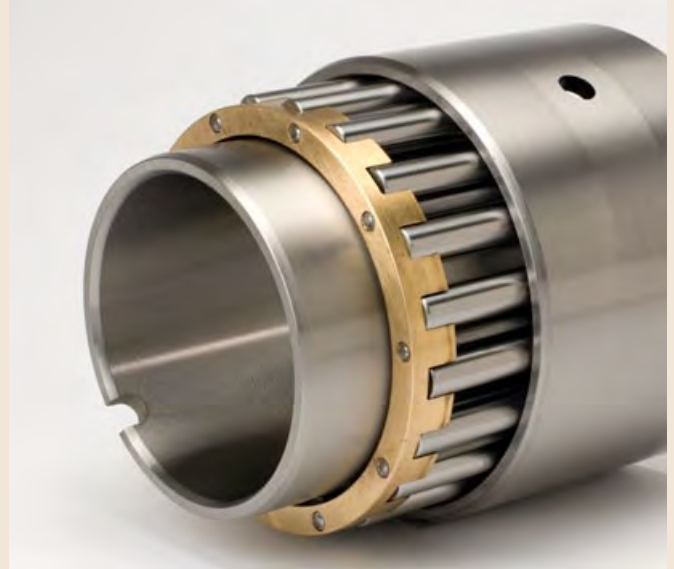
Installation and Proper Lubrication

It seems so obvious, but industry studies show that incorrect installation and improper lubrication programs are the most common causes for bearing failure and unplanned mill shutdowns. Work with us to ensure your maintenance team fully understands how to install the bearing and the complexities of lubrication. As they say, knowledge is power. We've served leading mills and corrugators for decades. Put our knowledge to work for your operations.



Bearing Rebuilding & Reconditioning Program

The photographs below represent (left) a bearing submitted for reconditioning, and (right) the bearing as it would leave our reconditioning facility.



Rebuilding vs. Replacement: The Advantage is Obvious

Scheerer can typically rebuild a large bearing and deliver it to you in a fraction of the time required to manufacture a new bearing. We also provide emergency repair service (sometimes within a 24-hour period).

With companies looking ever closer to the bottom-line, we find customers with large bearing investments are looking to us to help them maximize the service lifetime of their bearings and their heavy machinery. Some companies schedule planned reconditioning of critical bearing components to ensure business operations stay on schedule at maximum output.

Serving All Major Industries

Whether your application is earth moving, mining, pulp and paper manufacturing, wind energy, oil drilling, steel, utilities, material handling or transportation, we can reduce your downtime with our high-efficiency quick-turn rebuild and reconditioning program.

We Routinely Rebuild Ultra-large Bearings up to 100 in. O.D.

Our rebuild capabilities include radial ball and roller bearings, ball and roller thrust bearings from 2 inch I.D. to 100 inch O.D. in many different designs and materials. Scheerer will rebuild any type or style of bearing from any manufacturer.

You Know in Advance What You Are Getting and How Much it Will Cost

When you send us your bearings, our technicians inspect them thoroughly on arrival. A simplified rating system is used to determine the work needed to restore the bearing's operational parameters and a firm estimate is prepared.

Fraction of the Time. Fraction of the Cost.
Factor in a Reconditioning Program for New Bearings.

Scheerer Product Line & Services

RADIAL BALL BEARINGS

Single Row Deep Groove
Double Row Deep Groove
Angular Contact
Double Row Angular Contact
Max-Capacity
Self-Aligning
Four Point Contact
Split Inner Race
Reciprocating
All Special Types

BALL THRUST BEARINGS

Flat seat-Grooved Races
Flat seat-Flat races
Self-Aligning
Banded
Single or Double Acting
Combination
Angular Contact
All Special Types

OTHER PRODUCTS

Combination Radial and Thrust Bearings
Large Diameter to over 100"
All Types of Special Bearings
Hardened and Ground Sleeves
Bearing Components
Slewing Ring Bearings

RADIAL ROLLER BEARINGS

Cylindrical
Single Row
Multi-Row
Cross Roller
Journal
All Special Types

ROLLER THRUST BEARINGS Plain Type

Washers Only
Self-Aligning
Crane Hook
Combination
Single Acting
Double Acting
All Special Types

SERVICES

Bearing Repair and Reconditioning
Clearance Changes
Bore Tapering
Flush Grinding & Preloading
W-33 and W-26 Feature Additions
Snap Ring Grooving
Inspection Services
Ceramic Ball Installation
Special Coating Applications

Corrugator Machine Bearings



WA LOCATIONS

Unit 1 / 45 Inspiration Drive, Wangara WA 6065
(08) 9303 4966

Unit 16 / 51-53 Kewdale Road, Welshpool WA 6106
(08) 6314 1155

support@chainanddrives.com.au

NSW LOCATION

Unit 7 / 70 Holbeche Road, Arndell Park NSW 2148
(02) 9674 8611

salesnsw@chainanddrives.com.au



A Mechanical Equipment Group Company

chainanddrives.com.au