



D.I.D

XT Power Link

New Type of Reinforced Connecting Link

* Standard on most DID roller chain sizes *

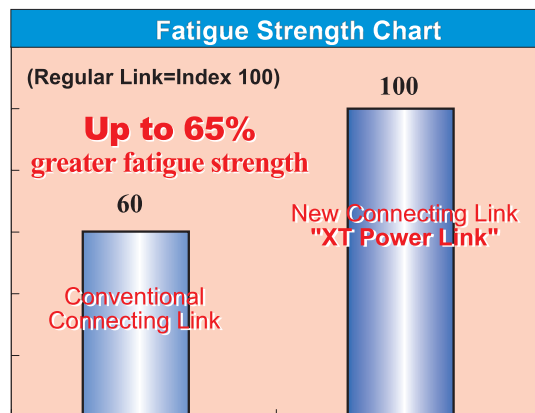
PAT.PEND.



1.

Connecting Link as strong as regular link.

Up to **65%** greater fatigue strength than conventional loose fit type connecting link.



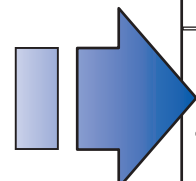
2.

Up to 27% higher Horsepower rating.

Example : DID 160 Max. Kilowatt Ratings (Unit : KW)

No. of Sprocket teeth	Rpm of smaller sprocket			
	10	25	50	100
11	2.68	6.12	11.4	21.3
12	2.95	6.72	12.5	23.4
13	3.21	7.33	13.7	25.5
14	3.48	7.94	14.8	27.6

DID160 with Conventional Connecting Link



No. of Sprocket teeth	Rpm of smaller sprocket			
	10	25	50	100
11	3.40	7.75	14.5	27.0
12	3.73	8.52	15.9	29.7
13	4.07	9.29	17.3	32.3
14	4.41	10.1	18.8	35.0

DID160 with **DID XT Power Link**

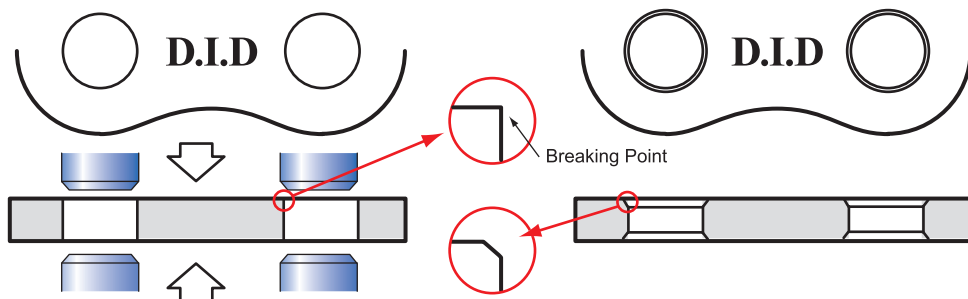
You can use a motor having up to 27% higher horsepower by just using DID XT Power Link !

3.

No need to select a larger size chain because of the connecting link strength.

CBP Treatment
Compression
Beveling
process

The cause of failure, weakness at the breakthrough edge of the link plate hole, is eliminated by CBP.



D.I.D XT Power Link

New Type Reinforced Connecting Link

PAT.PEND.

Why it was necessary to develop the "XT Power Link" ?

Since the fatigue strength of a conventional connecting link is approximately 60%-80% the fatigue strength of a regular link, chain selection has always been based on the lower fatigue strength of the of connecting link.



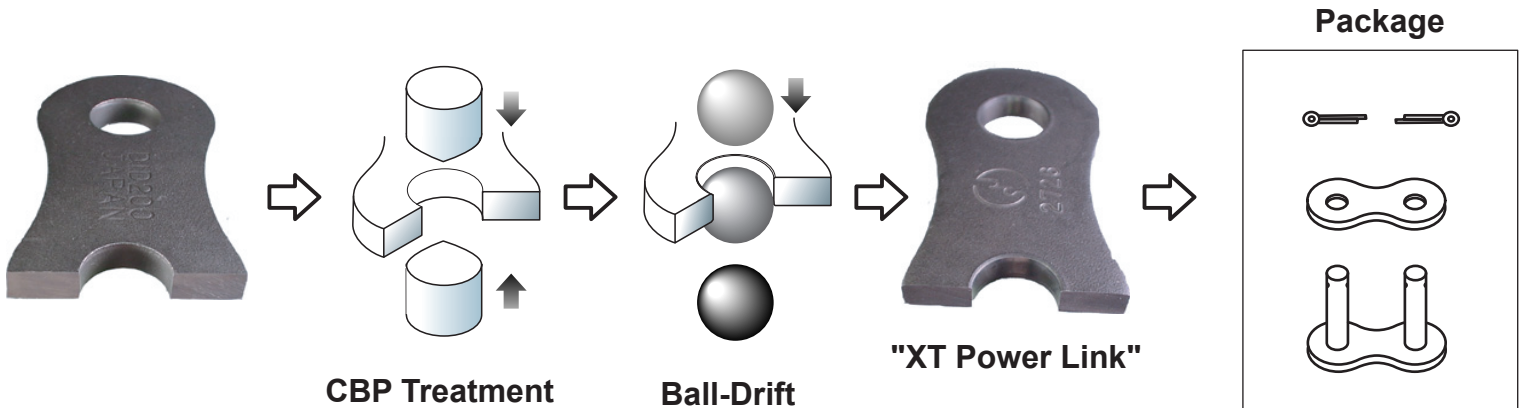
XT Power Link is a connecting link with fatigue strength equal to a regular link. DID's unique CBP (Compression Beveling Process) and Ball-drifting strengthens the XT Power Link by eliminating the weakness caused during standard connecting link manufacture. As a result, a larger sized chain need on longer be selected.

"XT Power Link" Line - Up / Chain Size & Connecting Link Type Standard on these D.I.D Roller Chain Sizes

JIS-ANSI No.	50	60	80	100	120	140	160	180	200	240
DID Chain size	DID 50	DID 60	DID 80	DID 100	DID 120	DID 140	DID 160	DID 180	DID 200	DID 240
Type	RJ,CJ			CJ						

RJ : Spring clip type connecting link CJ : Cotter type connecting link

Flowchart of the "XT Power Link" process



Distributed By:

DID® DAIDO KOGYO CO., LTD.

INDUSTRIAL PRODUCTS SALES & MARKETING DIV.
 3-5-4 NINGYO-CHO NIHONBASHI CHUO-KU.
 TOKYO 103-0013, JAPAN
 TEL : 81-3-3808-0781, FAX : 81-3-5695-7146
www.did-daido.co.jp