



## **JWTS**<sup>®</sup> MEGAlife

MEGAlife maintenance free roller and conveyor chains can be applied in all areas where post installation lubrication is not at all or only partly possible. This is the case in clean and dry surroundings or in applications with difficult lubrication passage. MEGAlife maintenance free chains are corrosion resistant due to nickel-plated parts and can be utilized in a temperature range from  $-40^{\circ}\text{C}$  up to  $+160^{\circ}\text{C}$ . The chains are supplied either dry or with special-purpose lubrication in line with the requirements of the applied application.



## **iwis® MEGAlife I and MEGAlife II**

The maintenance free iwis chains

### PROBLEM/INITIAL SITUATION

- Lubrication is not at all or only partly possible
- Clean & dry surroundings are required
- Difficult/obstructed lubrication passage
- Contamination of manufacturing outlet and conveyor apparatus due to chain lubrication

### OUR SOLUTION

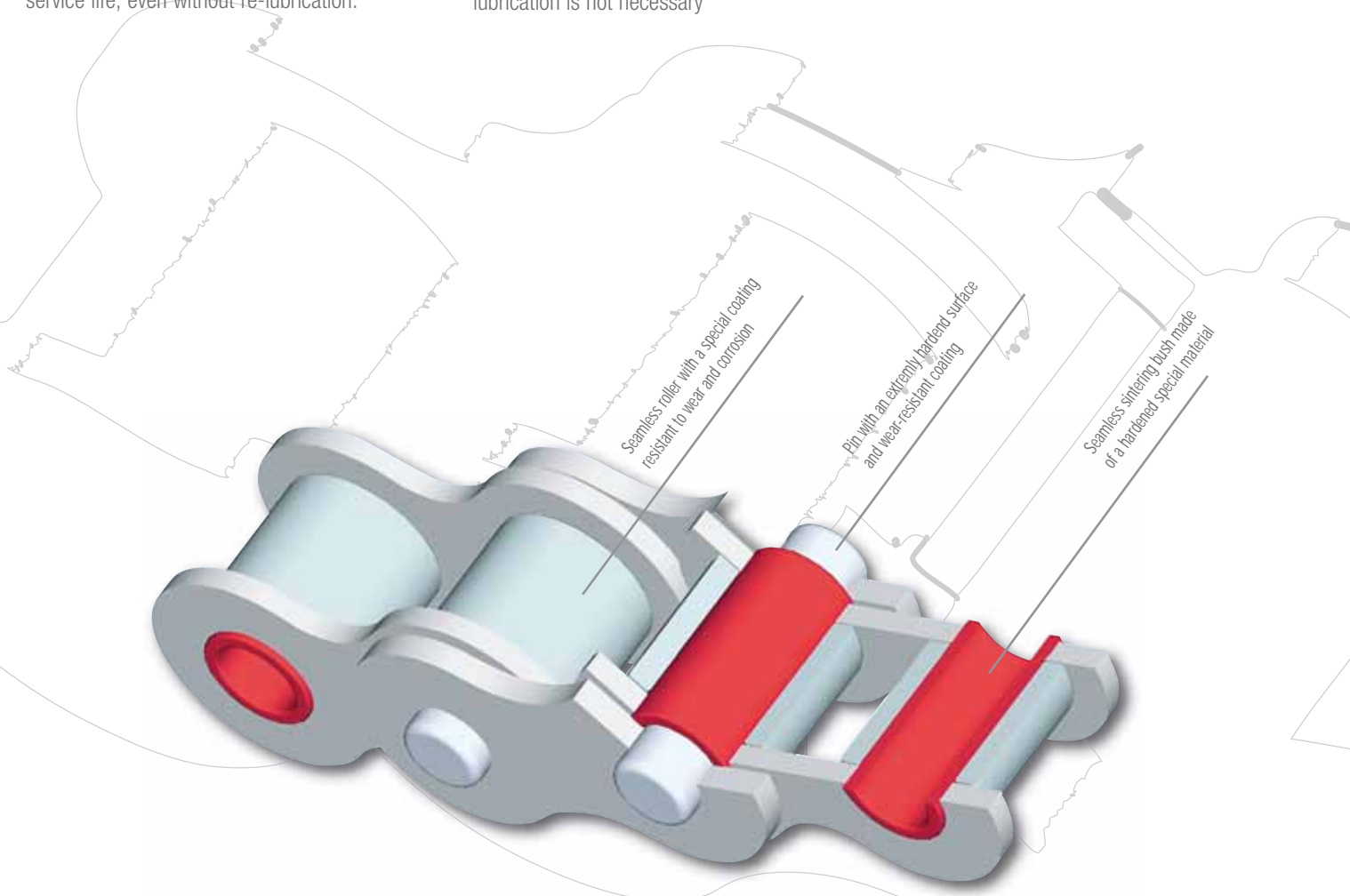
A high performance, maintenance-free chain with redesigned joints. Innovative technical details which result in an, as yet, unbeatable service life, even without re-lubrication.

### CUSTOMER BENEFITS

- Excellent wear resistance – even at high speeds and loads – where conventional maintenance free chains stretch
- Extremely high levels of fatigue and breaking strength
- Easy to dismantle
- Reduced overall maintenance cost
- Less production still-time
- Environmentally-friendly due to absence of excess lubrication
- Protected from corrosion
- Installations have fewer down times
- Environmentally friendly because lubrication is not necessary

### TECHNICAL FEATURES

- Available dry or with additional special lubricant
- Corrosion resistant
- Temperature range from -40 °C up to +160 °C
- Available as roller chain according to ISO 606 for driving purposes or as conveyor chain with attachments and extended components.





**HIGHLIGHTS MEGAlife I**

- Excellent wear resistance – even at high speeds and loads – where conventional maintenance free chains stretch
- Maintenance free under certain conditions
- Extremely high levels of fatigue and breaking strenght
- Protected from corrosion
- Easy to dismantle
- Reduced overall maintenance cost
- Less production still-time
- Environmentally friendly because lubrication is not necessary

**HIGHLIGHTS MEGAlife II**

- A distictive longer lifetime due to:
- A considerably improved wear resistance as a result of a special thermo-chemical treatment of the pins. Especially by fast running chain drives  $v > 3 \text{ m/s}$

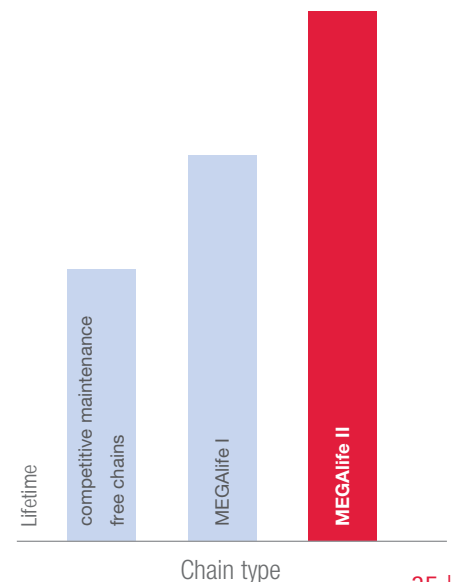
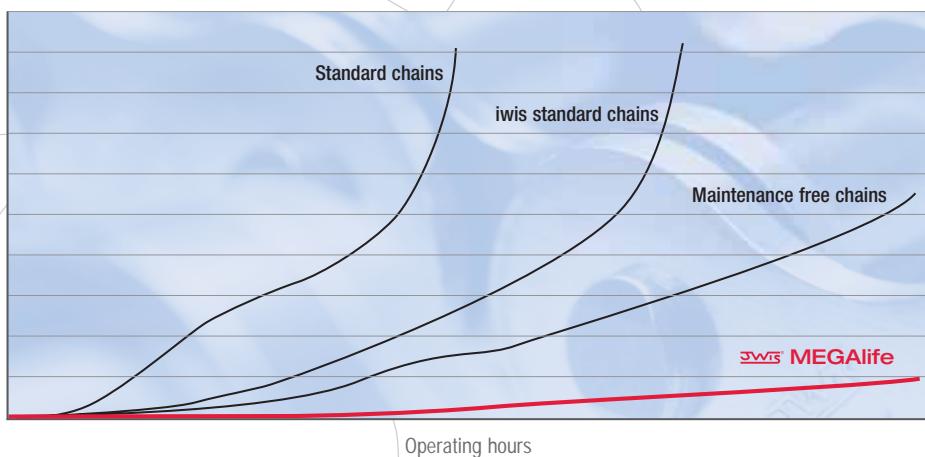
**AREAS OF APPLICATION**

- Packaging & Food Industry
- Printing Industry
- Conveyor-Equipment
- Textile & Clothing Industry
- Paper Manufacture & Book Binding Industry
- Electronic Industry & Circuit Board Manufacture
- Wood, Glass & Ceramic Industry
- Medical technology

... and of course in all areas where re-lubrication is not at all or only partly possible.

MEGAlife chains

Trial without re-lubrication at high speeds.  
Graphic representation corresponds to iwis test results.



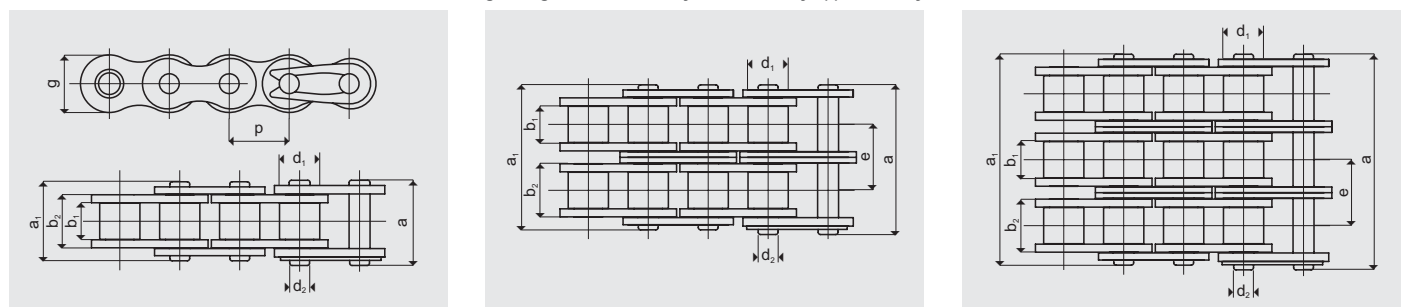


# JWIS® MEGAlife I roller chains

Complying with DIN 8187-1, ISO 606: 2004

DIN ISO no.	Ref. no. iwis	Pitch p (")	Pitch p (mm)	b <sub>1</sub> (mm) min.	Breaking strength F <sub>B</sub>			Weight per m q (kg/m)	Inner link		Outer link			Article No.		
					iwis (N) med.	Standard (N) min.	Breaking area f (cm <sup>2</sup> )		b <sub>2</sub> (mm) min.	g (mm) max.	a <sub>1</sub> (mm) max. <sup>1)</sup>	a (mm) max. <sup>1)</sup>	Roller d <sub>1</sub> (mm) max.		Pin d <sub>2</sub> (mm) max.	Transverse pitch e (mm)
<b>Simplex</b>																
06 B-1	G 67 ML*	3/8"	9,525	5,72	10.500	9.000	0,28	0,41	8,53	8,20	12,90	16,70	6,35	3,31	-	50033917
08 B-1	L 85 ML	1/2"	12,70	7,75	21.000	18.000	0,50	0,70	11,30	12,20	16,90	18,50	8,51	4,45	-	50026256
10 B-1	M 106 ML	5/8"	15,875	9,65	25.000	22.400	0,67	0,95	13,28	14,40	19,50	20,90	10,16	5,08	-	50026257
12 B-1	M 127 ML	3/4"	19,05	11,75	30.000	29.000	0,89	1,25	15,62	16,20	22,70	23,60	12,07	5,72	-	50026258
16 B-1	M 1611 ML	1"	25,4	17,02	75.000	60.000	2,10	2,70	25,45	21,10	36,10	36,90	15,88	8,28	-	50028923
<b>Duplex</b>																
06 B-2	D 67 ML	3/8"	9,525	5,72	19.000	16.900	0,56	0,78	8,53	8,20	23,40	24,60	6,35	3,31	10,24	50033832
08 B-2	D 85 ML	1/2"	12,70	7,75	40.000	32.000	1,00	1,35	11,30	12,20	30,80	32,40	8,51	4,45	13,92	50027439
10 B-2	D 106 ML	5/8"	15,875	9,65	50.000	44.500	1,34	1,85	13,28	14,40	36,00	37,50	10,16	5,08	16,59	50027509
12 B-2	D 127 ML	3/4"	19,05	11,75	60.000	57.800	1,78	2,50	15,62	16,40	42,10	43,00	12,07	5,72	19,46	50027457
16 B-2	D 1611 ML	1"	25,40	17,02	147.000	106.000	4,21	5,40	29,45	21,10	68,00	68,80	15,85	8,28	31,88	50033161
20 B-2	D 2012 ML	1 1/4"	31,75	19,56	210.000	170.000	5,84	7,36	29,01	25,40	79,70	82,90	19,05	10,19	36,45	50033771
<b>Triplex</b>																
08 B-3	TR 85 ML	1/2"	12,70	7,75	58.000	47.500	1,50	2,00	11,30	12,20	44,70	46,30	8,51	4,45	13,92	50027510
10 B-3	TR 106 ML	5/8"	15,875	9,65	75.000	66.700	2,02	2,80	13,28	14,40	52,50	54,00	10,16	5,08	16,59	50027511
12 B-3	TR 127 ML	3/4"	19,05	11,75	90.000	86.700	2,68	3,80	15,62	16,40	61,50	62,50	12,07	5,72	19,46	50027512
16 B-3	TR 1611 ML	1"	25,40	17,02	220.000	160.000	6,32	8,00	25,45	21,10	99,20	100,70	15,88	8,28	31,88	50033628
<b>Simplex/duplex - MEGAlife roller chains with straight side plates</b>																
10 B-1	M 106 ML-GL	5/8"	15,875	9,65	24.000	22.400	0,67	0,95	13,28	13,90	19,50	20,90	10,16	5,08	-	50035304
10 B-2	D 106 ML-GL	5/8"	15,875	9,65	47.500	44.500	1,34	1,85	13,28	13,90	36,00	37,50	10,16	5,08	16,59	50034083
12 B-1	M 127 ML-GL	3/4"	19,05	11,75	30.000	29.000	0,89	1,30	15,62	16,10	22,70	23,60	12,07	5,72	-	50037351
12 B-2	D 127 ML-GL	3/4"	19,05	11,75	63.000	57.800	1,78	2,50	15,62	16,10	42,10	43,00	12,07	5,72	19,46	50034084

\* also available in 10 m length (Art. 50035181), with straight side plates <sup>1)</sup> Differing dimensions for cranked links  
 If cranked links are fitted, it should be noted that the breaking strength of the chain may be reduced by approximately 20%.

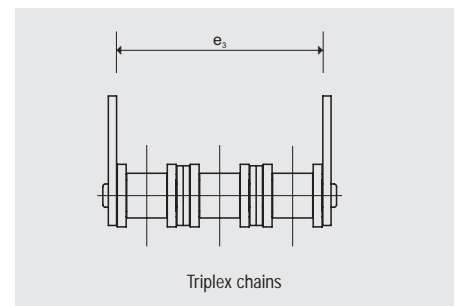
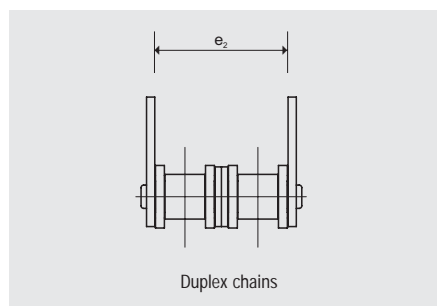
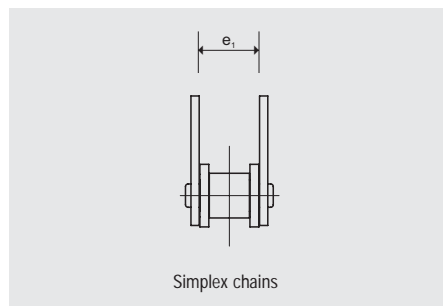


## **iwis**® MEGAlife I conveyor chains with straight attachment plates

based on iwisis roller chains complying with DIN 8187

DIN ISO no.	Ref. no. iwisis	Pitch <sup>2)</sup> p (")	p (mm)	a (mm)	b (mm)	d (mm)	Simplex chains e <sub>1</sub> (mm)	Duplex chains e <sub>2</sub> (mm)	Triplex chains e <sub>3</sub> (mm)	g (mm)	l (mm)	l (mm)	s (mm)	M (mm)	Threaded insert
															m max. (mm)
<b>Shape 102.1</b>															
08 B-1	L 85 ML <sup>1)</sup>	1/2"	12,7	13,0	19,0	4,2	11,6	25,5	39,4	5,4	-	18,0	1,5	4	5,2
10 B-1	M 106 ML <sup>1)</sup>	5/8"	15,875	16,3	24,3	5,2	13,6	30,1	46,6	6,8	-	24,0	1,6	5	5,3
12 B-1	M 127 ML <sup>1)</sup>	3/4"	19,05	19,1	29,1	6,2	15,9	35,3	54,7	7,4	-	28,0	1,8	5	5,5
16 B-1	M 1611 ML	1"	25,4	24,6	36,6	8,2	25,9	57,8	89,7	10,4	-	36,2	3,0	6	8,2
<b>Shape 103.1 and 103.2</b>															
08 B-1	L 85 ML <sup>1)</sup>	1/2"	12,7	17,0	23,0	4,2	11,6	25,5	39,4	5,4	12,7	23,6	1,5	4	5,2
10 B-1	M 106 ML <sup>1)</sup>	5/8"	15,875	16,3	25,8	5,2	13,6	30,1	46,6	7,5	15,8	31,0	1,6	5	5,3
12 B-1	M 127 ML <sup>1)</sup>	3/4"	19,05	18,3	29,0	6,2	15,9	35,3	54,7	9,0	19,0	37,2	1,8	5	5,5
16 B-1	M 1611 ML	1"	25,4	28,45	41,55	8,2	25,9	57,8	89,7	10,35	25,4	47,2	3,0	6	8,2

<sup>1)</sup> also for the corresponding duplex and triplex chains <sup>2)</sup> Nominal pitch

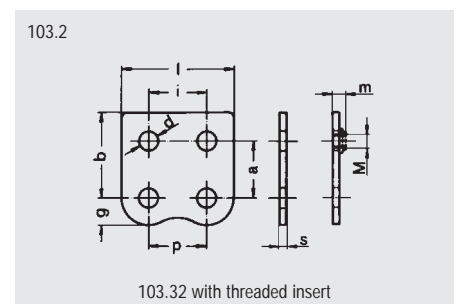
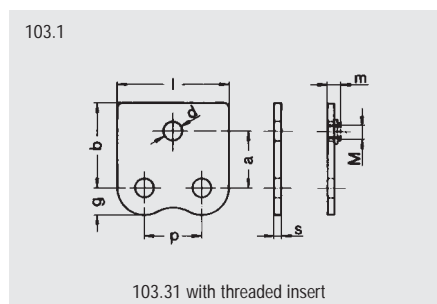
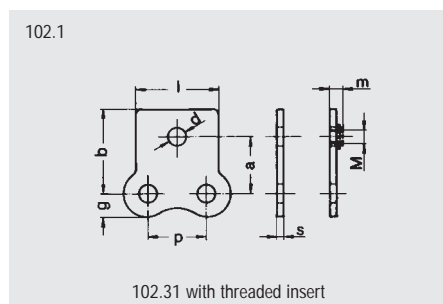


### STRAIGHT ATTACHMENTS

The types illustrated are also obtainable for connector and outer links for final assembly and repair.

Fitting attachments on one or both sides, on each outer link or at greater spacing is possible.

Other conveying chains and threaded inserts on request.

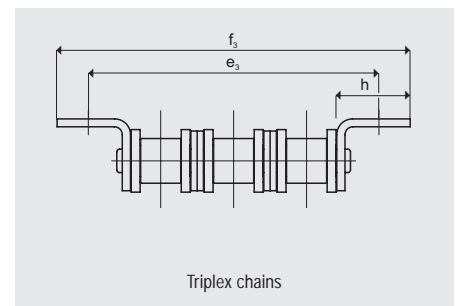
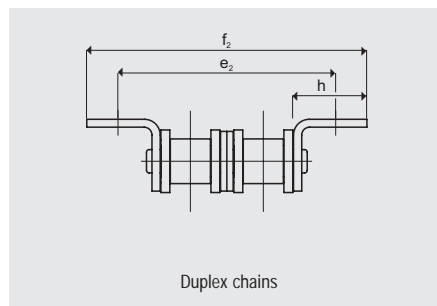
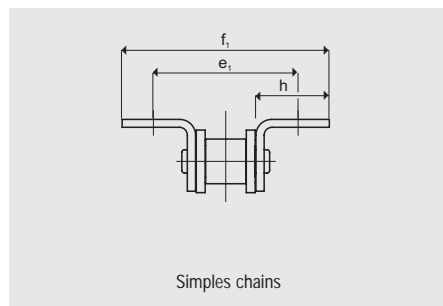


# IWIS® MEGAlife I conveyor chains with bent attachment plates

based on iwis roller chains complying with DIN 8187

DIN ISO no.	Ref. no. iwis	Pitch <sup>3)</sup>			Simplex chains			Duplex chains			Triplex chains			Threaded insert				
		p (")	p (mm)	c (mm)	d (mm)	e <sub>1</sub> (mm)	f <sub>1</sub> (mm)	e <sub>2</sub> (mm)	f <sub>2</sub> (mm)	e <sub>3</sub> (mm)	f <sub>3</sub> (mm)	g (mm)	h (mm)	i (mm)	l (mm)	s (mm)	M (mm)	m max (mm)
<b>Shape 202.1</b>																		
08 B-1	L 85 ML <sup>1)</sup>	1/2"	12,7	8,0	4,2	27,6	39,6	41,5	53,5	55,4	67,4	5,4	14,0	-	18,1	1,5	4	5,2
10 B-1	M 106 ML <sup>1)</sup>	5/8"	15,875	9,0	5,2	33,6	49,6	50,1	66,1	66,6	82,6	6,8	18,0	-	24,0	1,6	5	5,3
12 B-1	M 127 ML <sup>1)</sup>	3/4"	19,05	10,0	6,2	41,1	61,1	60,5	80,5	79,9	99,9	7,4	22,6	-	28,0	1,8	5	5,5
16 B-1	M 1611 ML	1"	25,4	16,0	8,2	53,9	77,9	85,8	109,8	117,7	141,7	10,4	26,0	-	36,2	3,0	6	8,2
<b>Shape 203.1 and 203.2</b>																		
08 B-1	L 85 ML <sup>1) 2)</sup>	1/2"	12,7	9,5	4,2	32,6	44,6	46,5	58,5	60,4	72,4	5,4	16,5	12,7	23,6	1,5	4	5,2
10 B-1	M 106 ML <sup>1) 2)</sup>	5/8"	15,875	11,0	5,2	30,6	49,6	47,1	66,1	63,6	82,6	7,5	18,0	15,8	31,0	1,6	5	5,3
12 B-1	M 127 ML <sup>1) 2)</sup>	3/4"	19,05	12,0	6,2	35,5	56,9	54,9	76,3	74,3	95,7	9,0	20,5	19,0	37,2	1,8	5	5,5
16 B-1	M 1611 ML	1"	25,4	18,0	8,2	57,7	83,9	89,6	115,8	121,5	147,8	10,4	29,0	25,4	47,2	3,0	6	8,2

Conveyor chains D 1611 ML and TR 1611 ML on request <sup>1)</sup> Also for the corresponding duplex and triplex chains <sup>2)</sup> Assembly of the bent attachments also possible inward over the chain **except** when fitted on both sides to D 85 ML, D 106 ML and D 127 ML <sup>3)</sup> Nominal pitch

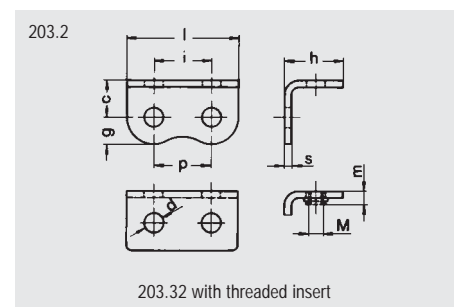
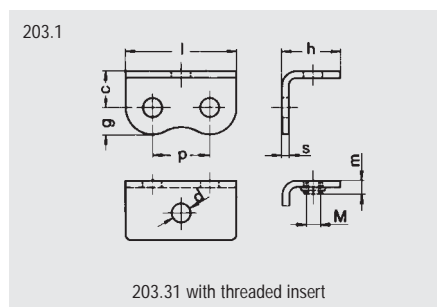
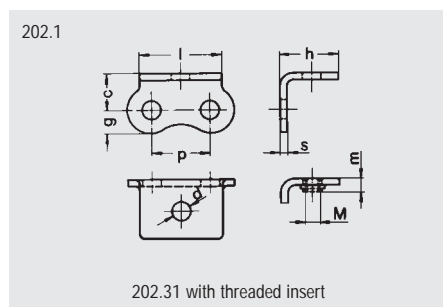


## BENT ATTACHMENTS

The types illustrated are also obtainable for connector and outer link for final assembly and repair. Assembly of the bent attachments

with threaded insert over the chain facing inwards is not possible. Fitting bent attachments on one or both sides on each outer

link or at greater spacing is possible. Other conveying chains and threaded inserts on request.



## iwis® MEGAlife I conveyor chains with extended pins

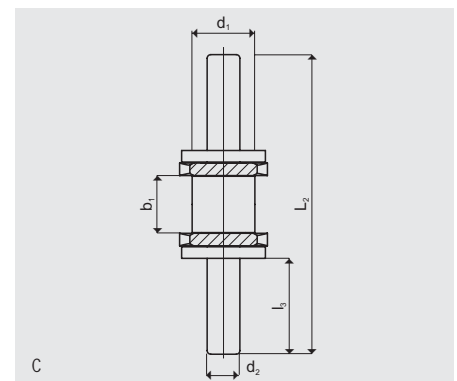
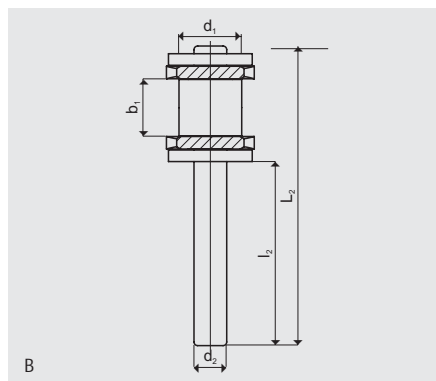
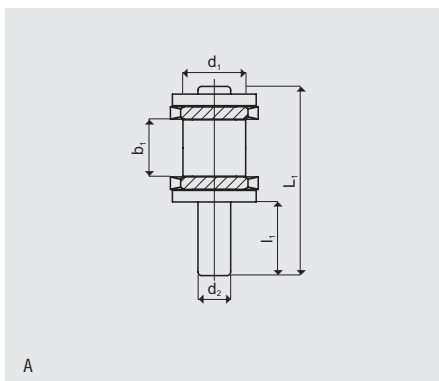
based on iwis roller chains complying with DIN 8187

DIN ISO no.	Ref. no. iwis <sup>1)</sup>	p <sup>(2)</sup> p (")	Pitch <sup>2)</sup>		Inner width b <sub>1</sub> (mm)	Roll diameter d <sub>1</sub> (mm)	Pin diameter d <sub>2</sub> (mm)	Design A			Design B and C	
			p (mm)					L <sub>1</sub> (mm)	l <sub>1</sub> (mm)	L <sub>2</sub> (mm)	l <sub>2</sub> (mm)	l <sub>3</sub> (mm)
<b>Pin type A, B, C</b>												
08 B-1	L 85 ML <sup>1)</sup>	1/2"	12,7		7,75	8,51	4,45	25,5	10,0	40,5	25,0	13,0
10 B-1	M 106 ML <sup>1)</sup>	5/8"	15,875		9,65	10,16	5,08	30,0	12,0	48,0	30,0	15,5
12 B-1	M 127 ML <sup>1)</sup>	3/4"	19,05		11,75	12,07	5,72	36,0	15,0	51,0	30,0	15,5
16 B-1	M 1611 ML	1"	25,4		17,02	15,88	8,28	53,8	20,0	68,5	35,0	18,0

<sup>1)</sup> For multiple chains on request <sup>2)</sup> Nominal pitch Other pin lengths and shapes on request

### EXTENDED PINS

The types illustrated are also available as connecting links and outer links for final assembly and repair (C only as outer link).



### SPECIAL MEGAlife VERSIONS

MEGAlife roller chains are also available in the following special versions:

For example:

- MEGAlife transfer chains with high resistant plastic support brackets or
- maintenance free power and free conveyor chains.

Contact us, our Sales Team will be pleased to advice you.



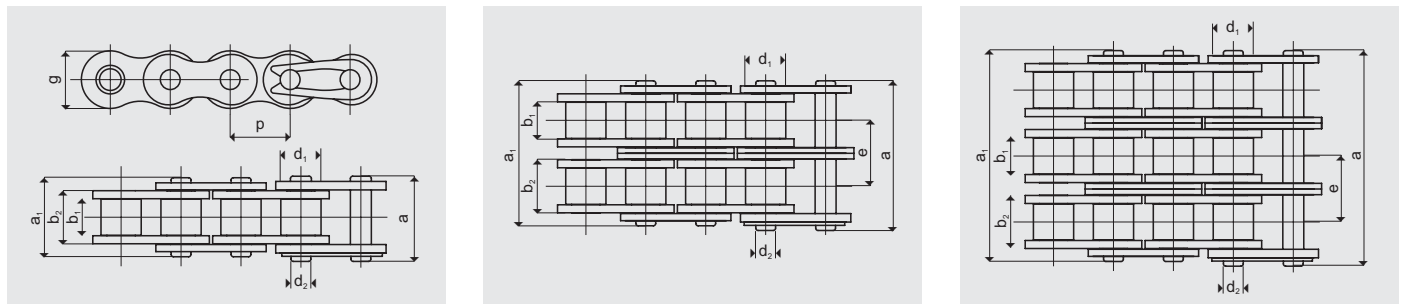
# IWIS® MEGAlife II – Roller chains

Complying with DIN 8187-1, ISO 606: 2004

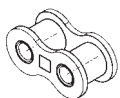
DIN ISO no.	Ref. no. iwis	Pitch p (")	Pitch p (mm)	Breaking strength $F_B$			Weight per m			Inner link			Outer link			5 m Versions	Article No.
				iwis (N) med.	Standard (N) min.	Bearing area f (cm <sup>2</sup> )	q (kg/m)	$b_1$ (mm) min.	$b_2$ (mm) min.	g (mm) max.	$a_1$ (mm) max. 1)	a (mm) max. 1)	Roller $d_1$ (mm) max.	Pin $d_2$ (mm) max.	Transverse pitch e (mm)		
<b>Simplex</b>																	
06 B-1	G 67 ML-2 *	3/8"	9,525	10.500	9.000	0,28	0,41	5,72	8,53	8,20	12,90	14,10	6,35	3,31	-	50030791	
08 B-1	L 85 ML-2	1/2"	12,70	22.000	18.000	0,50	0,70	7,75	11,30	12,20	16,90	18,50	8,51	4,45	-	50030461	
10 B-1	M 106 ML-2	5/8"	15,875	25.000	22.400	0,67	0,95	9,65	13,28	14,40	19,50	20,90	10,16	5,08	-	50030462	
12 B-1	M 127 ML-2	3/4"	19,05	30.000	29.000	0,89	1,25	11,75	15,62	16,40	22,70	23,60	12,07	5,72	-	50030463	
16 B-1	M 1611 ML-2	1"	25,4	75.000	60.000	2,10	2,70	17,02	25,45	21,10	36,10	36,90	15,88	8,28	-	50030464	
20 B-1	M 2012 ML-2	1"	25,4	120.000	95.000	5,84	7,36	19,56	29,10	26,60	77,00	79,70	19,05	10,17	36,45	50030465	
<b>Duplex</b>																	
06 B-2	D 67 ML-2	3/8"	9,525	19.000	16.900	0,56	0,78	5,72	8,53	8,20	23,40	24,60	6,35	3,31	10,24	50031074	
08 B-2	D 85 ML-2	1/2"	12,70	40.000	32.000	1,00	1,35	7,75	11,30	12,20	30,80	32,40	8,51	4,45	13,92	50030465	
10 B-2	D 106 ML-2	5/8"	15,875	56.000	44.500	1,34	1,85	9,65	13,28	14,40	36,00	37,50	10,16	5,08	16,59	50030466	
12 B-2	D 127 ML-2	3/4"	19,05	68.000	57.800	1,78	2,50	11,75	15,62	16,40	42,10	43,00	12,07	5,72	19,46	50030467	
<b>Triplex – ML-2 roller chains on request</b>																	
<b>Simplex – ANSI roller chains, complying with DIN 8188-1, American standard, ISO 606: 2004</b>																	
12 A-1 ANSI 60	M 128 AML-2	3/4"	19,05	42.000	31.800	1,06	1,47	12,70	17,75	18,00	25,30	26,70	11,91	5,94	-	50031073	
16 A-1 ANSI 80	M 1610 AML-2	3/4"	19,05	68.000	56.700	1,79	2,57	15,88	22,40	22,80	32,00	33,90	15,88	7,94	-	50033770	

**ML-2 conveyor chains on request**

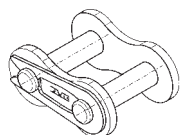
<sup>1)</sup> Differing dimensions for cranked links. If cranked links are fitted, it should be noted that the breaking strength of the chain may be reduced by approximately 20%.



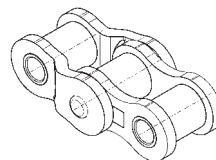
**INDIVIDUAL COMPONENTS AND CONNECTING LINKS**



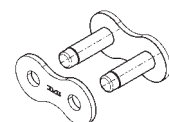
Nr. 2 Inner link  
Standard designation B



Nr. 3 Connecting link with spring clip  
Standard designation E



Nr. 7 Double cranked link  
Standard designation C



Nr. 8 Outer link  
Standard designation A

## **iwis**® MEGAlife conveyor chains

Examples of special chain designs

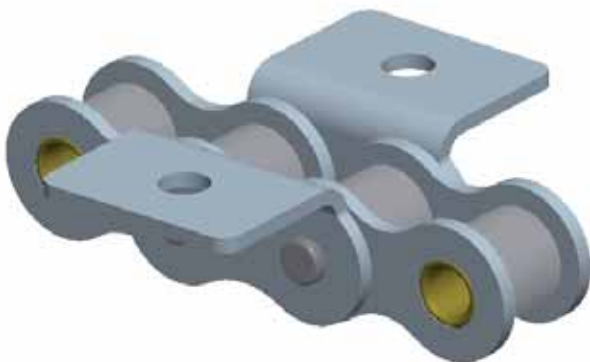
MEGAlife conveyor chain with straight attachment plates



MEGAlife conveyor chain with extendend pins



MEGAlife conveyor chain with bent attachment plates



MEGAlife conveyor chain with special attachment plates

