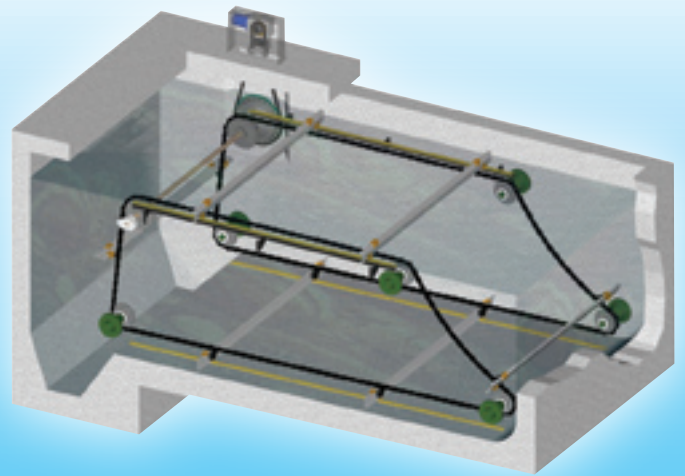


ENVIRONMENTAL SCRAPER COMPONENTS & SYSTEMS FOR THE SEWAGE AND WASTE WATER TREATMENT INDUSTRY

As the Exclusive Australian Distributor for Hitachi Environmental Products, Chain & Drives offers a wide variety of products and components for use within most standard design wastewater treatment facility scraper systems. By sourcing both stainless steel and non metallic chain products from purpose build manufacturing plants in Japan and the USA Chain & Drives can offer aftermarket replacement and complete new system installations on most applications.



**Non-Metallic
Chains**



**Stainless
Chains**



Hitachi Metals Techno, Ltd.



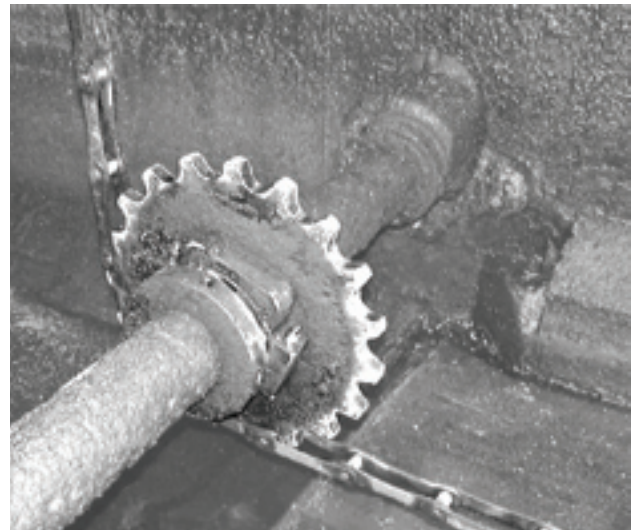
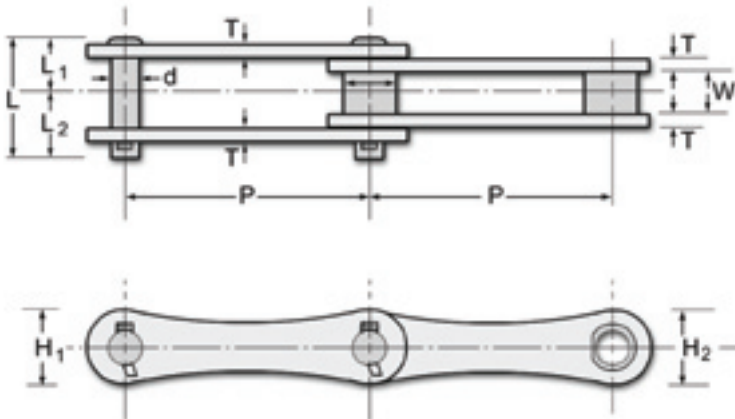
SAV 715 Stainless Steel Chain

SAV 715 Chain, the first stainless steel curved sidebar chain equivalent. Lightweight yet with a higher strength to weight ratio than cast chain SAV 715 is fabricated of 403 stainless steel and has been proven superior for the high load applications and has readily available several common attachment link designs for Bar Screen and Grit Collector requirements.

The SAV 715 is the result of brilliant design and the application of unique metals technology providing a collector chain of unmatched service life and application potential for a wide range of service requirements. With over 3,000,000 feet of chain in service world wide and a typical service life measured in decades, the SAV 715 is the ideal chain for collector chain service.



- Strong
- Lightweight
- 403 stainless steel



Dimensions and Strength of SAV 715 Chain

Chain No.	Pitch P (in.)	Minimum Ultimate Strength (lbs.)	Weight (lbs./ft.)	Barrel			Pin			Side Bars			
				Outside Dia	Width	Dia	Length (in.)			Pin Link		Brushed Link	
				D	W	d	L	L ₁	L ₂	H ₁	T	H ₂	T
SAV 715	6.00	29,000	3.9	1.024	1 3/16	0.569	2 27/32	1 9/32	1 9/16	1 37/64	15/64	1 57/64	15/64



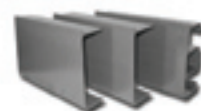
Sprockets



Non-Metallic Chains



Stainless Chains



Fibreglass Flights



SAV 709 Stainless Steel Chain

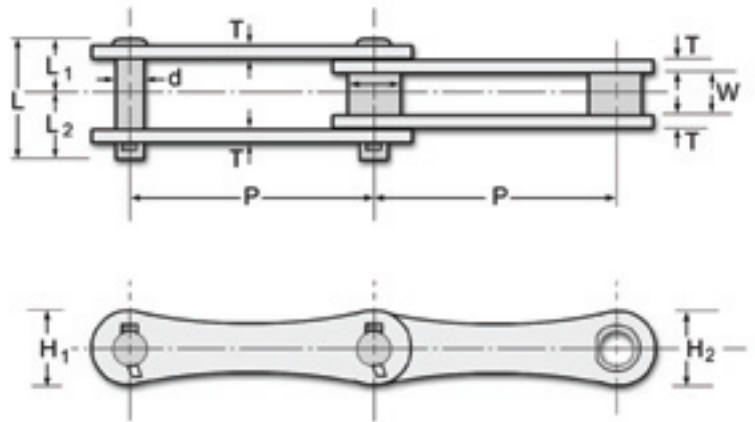
SAV 709 chain was designed as an economical Stainless steel chain alternative to non-metallic and cast chain for rectangular clarifier usage. Maintaining the same materials and design as SAV 715, the primary difference between the two chains is the SAV 709 chains ability to run on standard 720 series sprockets. The chain can be used with fiberglass or wooden flights. No special modifications to the existing system or tank layout is required.

SAV 709 Key Features

Average ultimate Strength of 19,000 lbs. makes the SAV 709 comparable to even high strength composite chains. The 403 stainless steel material has over 28 years of proven experience in waste-water treatment chain applications. Special manufacturing processes provide a chain with unmatched resistance to abrasion and corrosion resulting in extended service life. The light weight offers ease of installation and requires very little maintenance. SAV 709 can be used with non-metallic, steel, or cast iron sprockets.



- 403 Stainless Steel
- Direct Interchange with 720 Non-Metallic and Cast Chains
- Lightweight (2.2 Lbs)
- High Strength (19,000 Lbs)
- "J" Cotter Assembly



Dimensions and Strength of SAV 709 Chain

Chain No.	Pitch P (in.)	Minimum Ultimate Strength (lbs.)	Weight (lbs./ft.)	Barrel			Pin			Side Bars			
				Outside Dia	Width	Dia	Length (in.)			Pin Link		Brushed Link	
				D	W	d	L	L ₁	L ₂	H ₁	T	H ₂	T
SAV 709	5.844	19,000	2.2	0.882	1 17/64	0.453	2 37/64	1 11/64	1 13/32	1 7/32	3/16	1 29/64	3/16



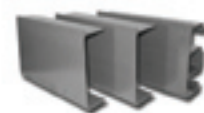
Sprockets



Non-Metallic Chains



Stainless Chains



Fiberglass Flights



NM 720S Non-Metallic Chain

Hitachi Maxco's latest generation of non-metallic 6" pitch collector chain features extremely high strength and significant advances in durability for better service life and a broader range of application capability including DAF, Scum Concentrator and Grit collector service.

Easy to Retrofit – Interchangeable

Directly interchangeable with any 720 type chain, the NM 720S is ideal for retro-fit or rehab of existing clarifiers* Easily adaptable to Rectangular Clarifiers using 720 style components

** non-metallic 720 chains are not interlaceable.*



**6" Pitch
Collector Chain**

- Acetal Link – Reinforced Nylon Pin
- Positive Locking Pin
- High Strength
- Excellent UV Resistance



**3,100 Lbs Working Load
1.6Lbs. per ft.
Snap Tight Pin – No Clips!**

6" Pitch NM 720S Collector Chain operates with any 720S sprockets and flights, ideal for replacement chains.



NH78 Drive Chain

for long and cross collector in Stainless Steel and Non-metallic.

NH78 Sprockets

in 11 tooth drive with shear pin option and 40 Tooth offset bull sprocket design interchangeable with existing installations

Fibreglas C Channel Flights

for long and cross scrapers as available in Standard, Reinforced and Heavy Duty design in FRP Fibreglas and Aluminium construction to suit the Stainless Steel and Non Metallic Chain scrapers.

Return Rails and Brackets

with UHMWPE wear strip for rail and floor mounting

Hear Shaft Assembly

with non metallic bearing kits for long life low maintenance.

Cast Nylon Wear Shoes

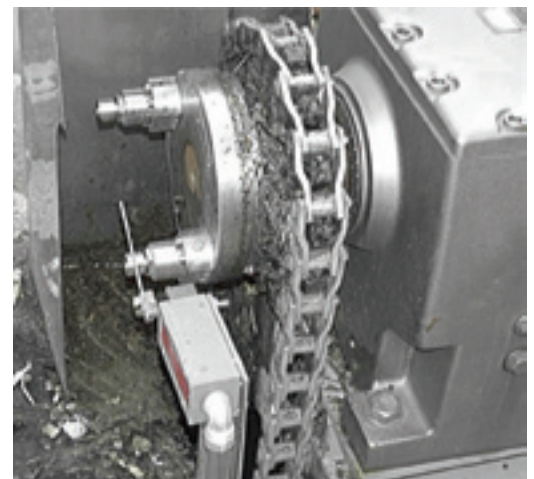
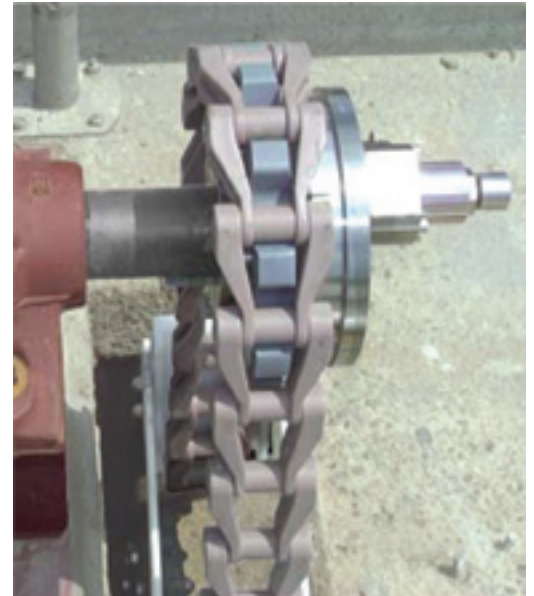
for flights contacting return rails and floor wear stri

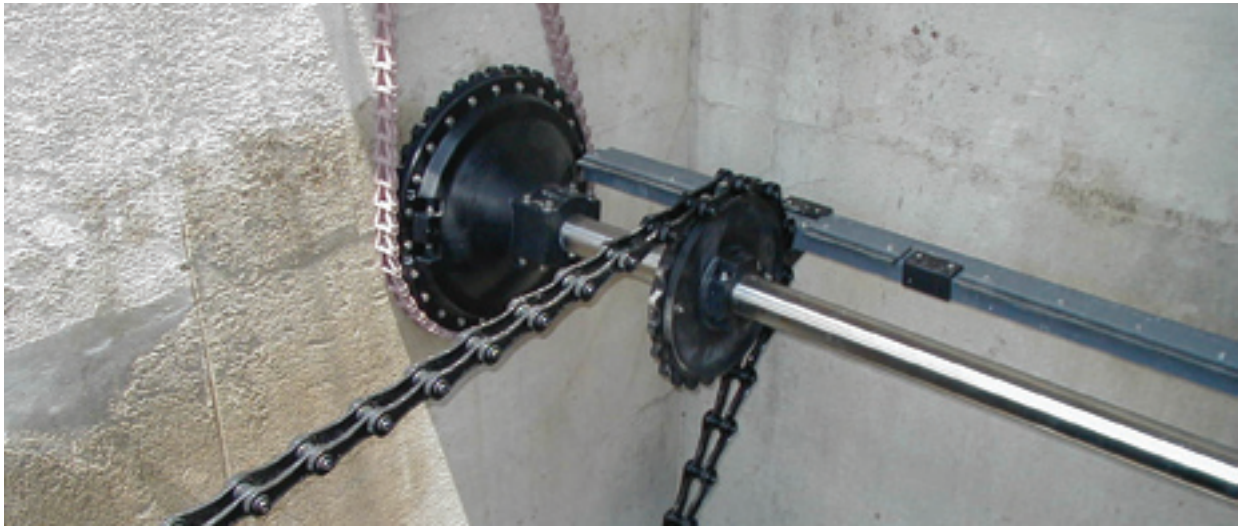
Cast Nylon Stub Shaft

with non metallic zero maintenance bearing sleeve for maximum service life of idler shafts.

720 Sprockets

in standard drive and idler tooth sizes for new installations, upgrade and maintenance of existing applications. Cast Nylon for non metallic and stainless steel chains and also hybrid segmented sprockets specifically designed for stainless steel chain systems.





Stainless Steel and Steel Head Shaft assemblies running on non metallic zero maintenance wall mounted bearing assemblies. Lightweight non metallic chain and flight assemblies allow more torque to be transmitted to move the produce rather than the system itself. Steel and stainless steel shafting ensure positive drive without deflection under load for maximum system service life. Even in a non metallic system some things still need to be steel to maximise system service life.



- **3 & 4 Shaft Longitudinal Scrapers for Primary and Secondary Rectangular Clarifiers**
- **3 Shaft Cross Scrapers**
- **2 & 3 Shaft Surface Skimmers**
- **DAF Tank Systems**
- **Grit Elevator Systems**
- **Bucket Elevator Systems**

Distributors:

SALES AND ENGINEERING
Unit 1, 45 Inspiration Drive
Wangara WA 6065

WORKSHOP AND DISTRIBUTION
22 Beneficial Way
Wangara WA 6065

SALES AND ENGINEERING NSW
Unit 7 & 8, 4 Abbott Road
Seven Hills NSW 2147
T +61 2 9674 8611 F +61 2 9674 8363

PO Box 1343, Wangara WA 6947
P +61 8 9303 4966 F +61 8 9303 4977

